

Rogers Site C9793

PROPOSED 90M GUYED TOWER
TOWN OF THE BLUE MOUNTAINS

Photo Simulations

Long & Short Range



Image 7

Image 3

Ravenna
Image 2

Image 4

Image 1

C9793 - Proposed 90m Guyed Tower.

Image 6

Image 5

RED WING

Photo Simulation Key Map

Subject Property

BEFORE



© 2024 Google

Google Earth

El: 402

Image 1: Taken on Grey County Rd 2, directly in front of proposed site

AFTER



© 2024 Google

Google Earth

Image 1: Taken on Grey County Rd 2, directly in front of proposed site, with Rogers proposed equipment

AFTER



Image 1: Taken on Grey County Rd 2, directly in front of proposed site, showing potential equipment from multiple carriers.

Short Range

Less than 1 km from Site

BEFORE



Image 2: Taken from Grey County Rd 2 north corner of landlord's property looking south, approximately 350m from proposed site

AFTER



Image 2: Taken from Grey County Rd 2 north corner of landlord's property looking south, approximately 350m from proposed site, with Rogers' proposed equipment

AFTER



Image 2: Taken from Grey County Rd 2 north corner of landlord's property looking south, approximately 350m from proposed site, showing potential equipment from multiple carriers



Image 3: Taken on Grey County Rd 2, North of Grey County Rd 119 at 496003 Grey County Rd 2 looking south, approximately 800m from proposed site.

AFTER



Image 3: Taken on Grey County Rd 2, North of Grey County Rd 119 at 496003 Grey County Rd 2 looking south, approximately 800m from proposed site, with Rogers' proposed equipment.

AFTER



Image 3: Taken on Grey County Rd 2, North of Grey County Rd 119 at 496003 Grey County Rd 2 looking south, approximately 800m from proposed site, showing potential equipment from multiple carriers.

Long Range

Greater than 1 km from Site

BEFOR



Image 4: Taken on Grey Rd 119 at 628162 Grey County Rd 119 Looking East, approximately 1.2km from proposed site.

EI: 336

AFTER



Image 4: Taken on Grey Rd 119 at 628162 Grey County Rd 119 Looking East, approximately 1.2km from proposed site, with Rogers' proposed equipment. El: 336

AFTER



Image 4: Taken on Grey Rd 119 at 628162 Grey County Rd 119 Looking East, approximately 1.2km from proposed site, showing potential equipment from multiple carriers. El: 336

BEFORE



Image 5: Taken from Grey County Rd 2 North of 12th Side Rd Looking North, approximately 1km from proposed site.

AFTER



Image 5: Taken from Grey County Rd 2 North of 12th Side Rd Looking North, approximately 1km from proposed site, with Rogers' proposed equipment.



AFTER

Image 5: Taken from Grey County Rd 2 North of 12th Side Rd Looking North, approximately 1km from proposed site, showing potential equipment from multiple carriers.

BEFORE



Image 6: Taken from 10th Line, south of Grey Rd 119, looking East, approximately 2.6km from proposed site.

BEFORE

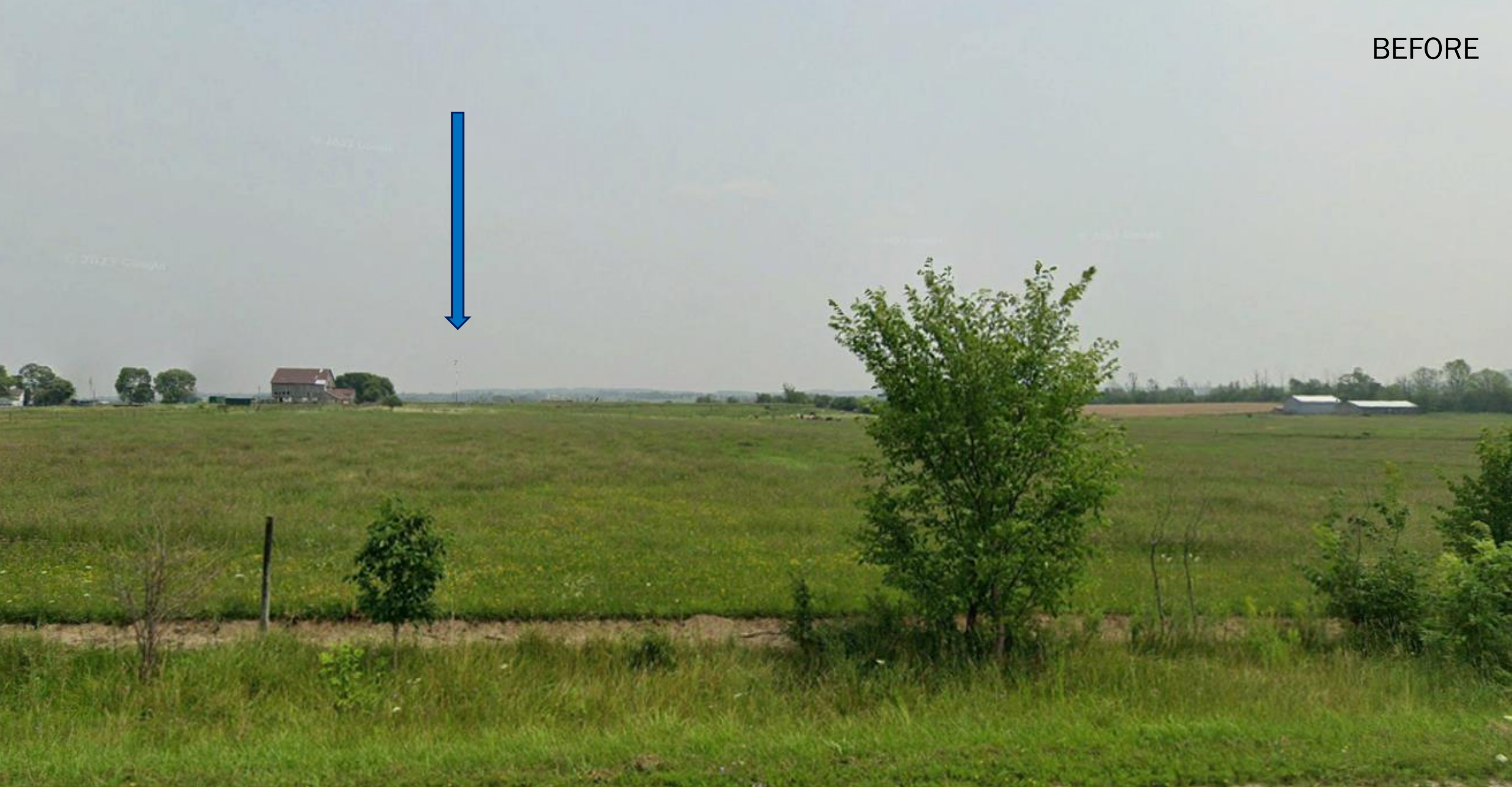


Image 6: Taken from 10th Line, south of Grey Rd 119, looking East, approximately 2.6km from proposed site, with Rogers' proposed equipment.

BEFORE



Image 6: Taken from 10th Line, south of Grey Rd 119, looking East, approximately 2.6km from proposed site, showing potential equipment from multiple carriers.

BEFORE



Image 7: Taken from 6th Line, south of Grey Rd 119, looking west, approximately 3km from proposed site.

AFTER



Image 7: Taken from 6th Line, south of Grey Rd 119, looking west, approximately 3km from proposed site, with Rogers' proposed equipment.

AFTER

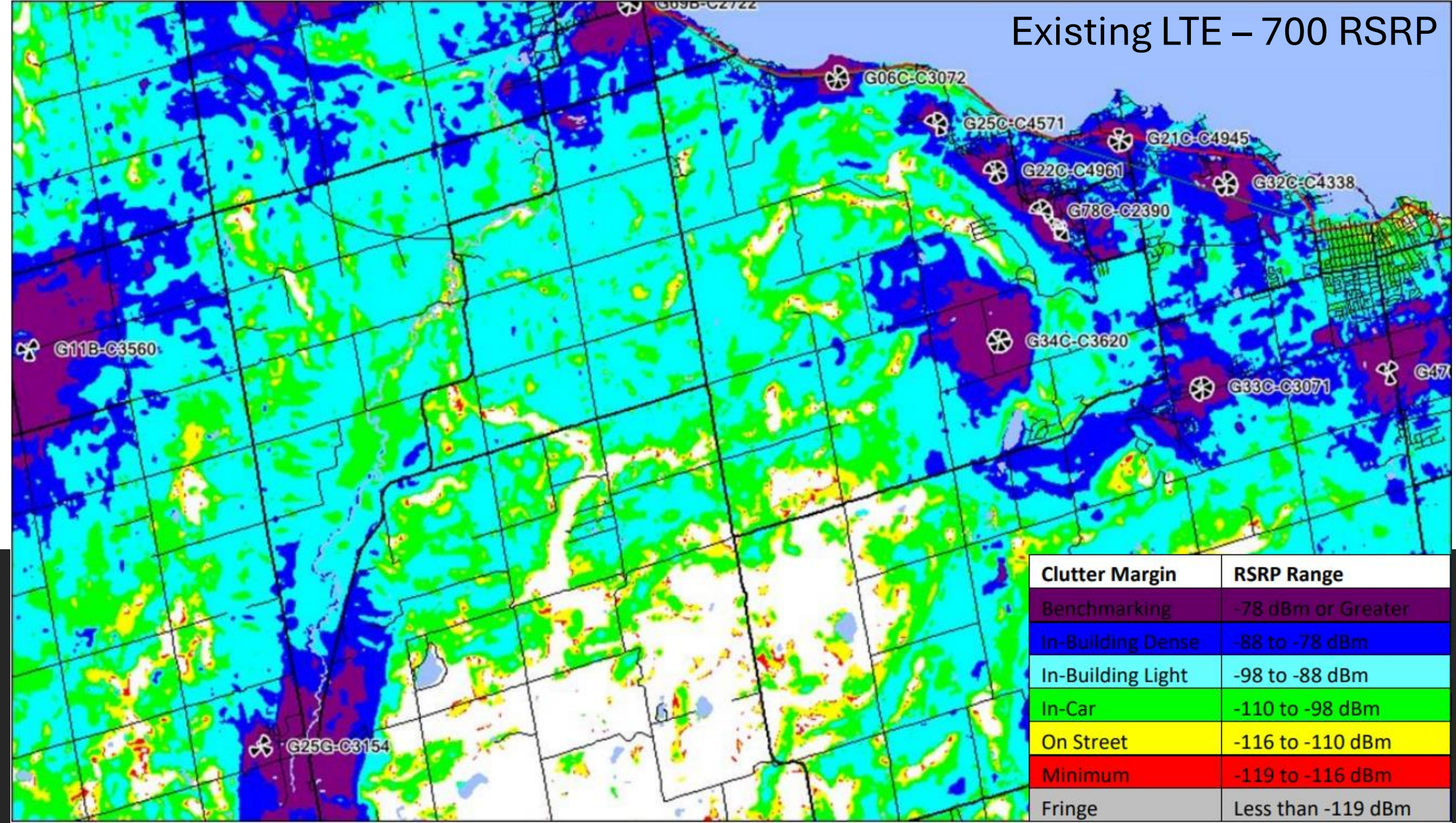


Image 7: Taken from 6th Line, south of Grey Rd 119, looking west, approximately 3km from proposed site, showing potential equipment from multiple carriers. EI: 471

Existing & Future Coverage

LTE 700 MHz & LTE 2100 MHz

Existing LTE – 700 RSRP



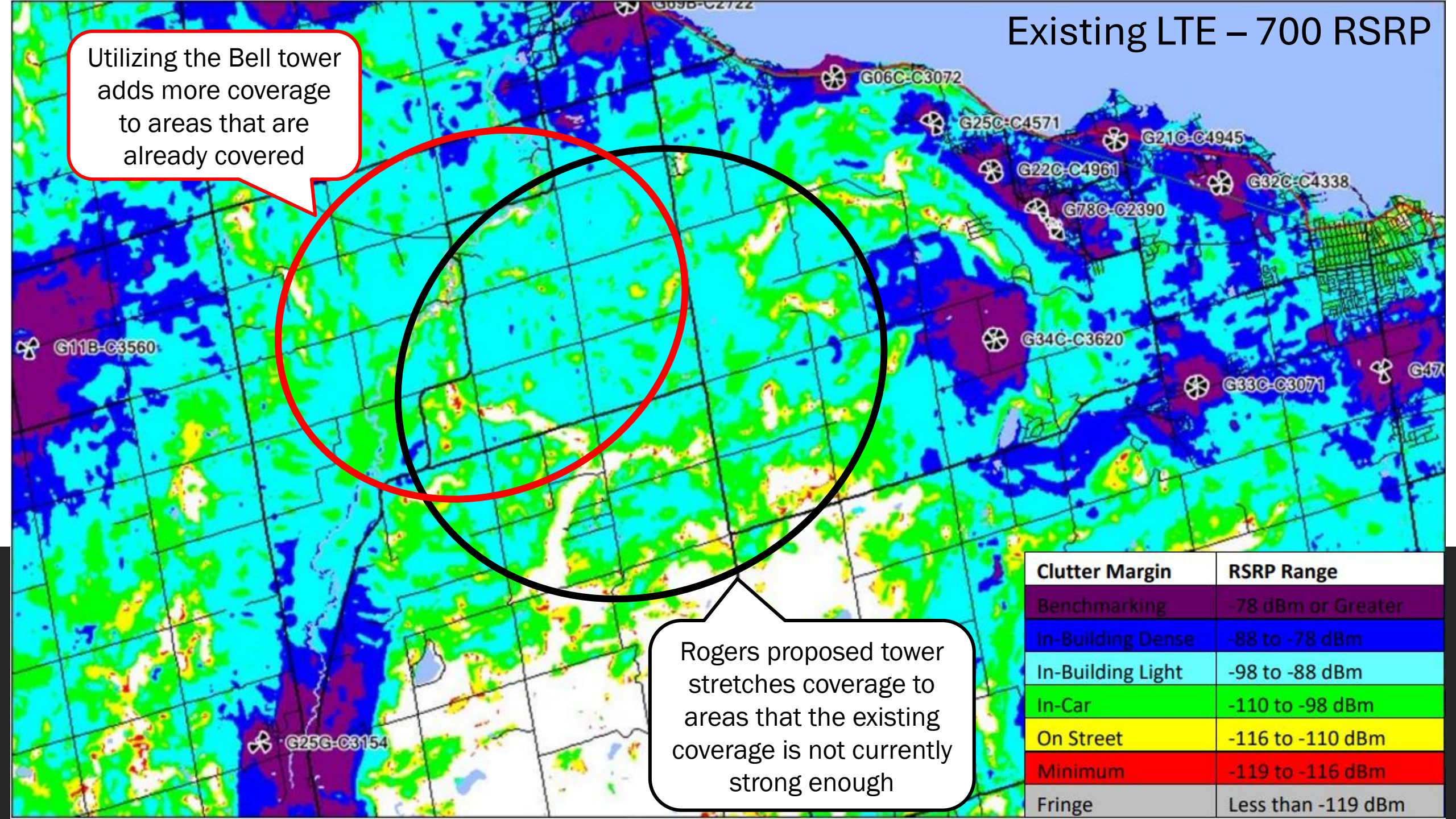
Clutter Margin	RSRP Range
Benchmarking	-78 dBm or Greater
In-Building Dense	-88 to -78 dBm
In-Building Light	-98 to -88 dBm
In-Car	-110 to -98 dBm
On Street	-116 to -110 dBm
Minimum	-119 to -116 dBm
Fringe	Less than -119 dBm

Existing LTE – 700 RSRP

Utilizing the Bell tower adds more coverage to areas that are already covered

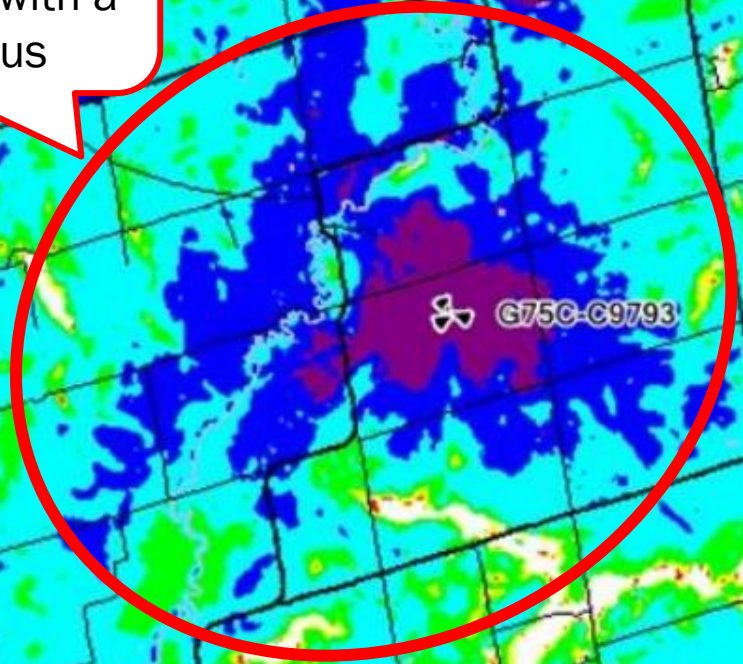
Rogers proposed tower stretches coverage to areas that the existing coverage is not currently strong enough

Clutter Margin	RSRP Range
Benchmarking	-78 dBm or Greater
In-Building Dense	-88 to -78 dBm
In-Building Light	-98 to -88 dBm
In-Car	-110 to -98 dBm
On Street	-116 to -110 dBm
Minimum	-119 to -116 dBm
Fringe	Less than -119 dBm



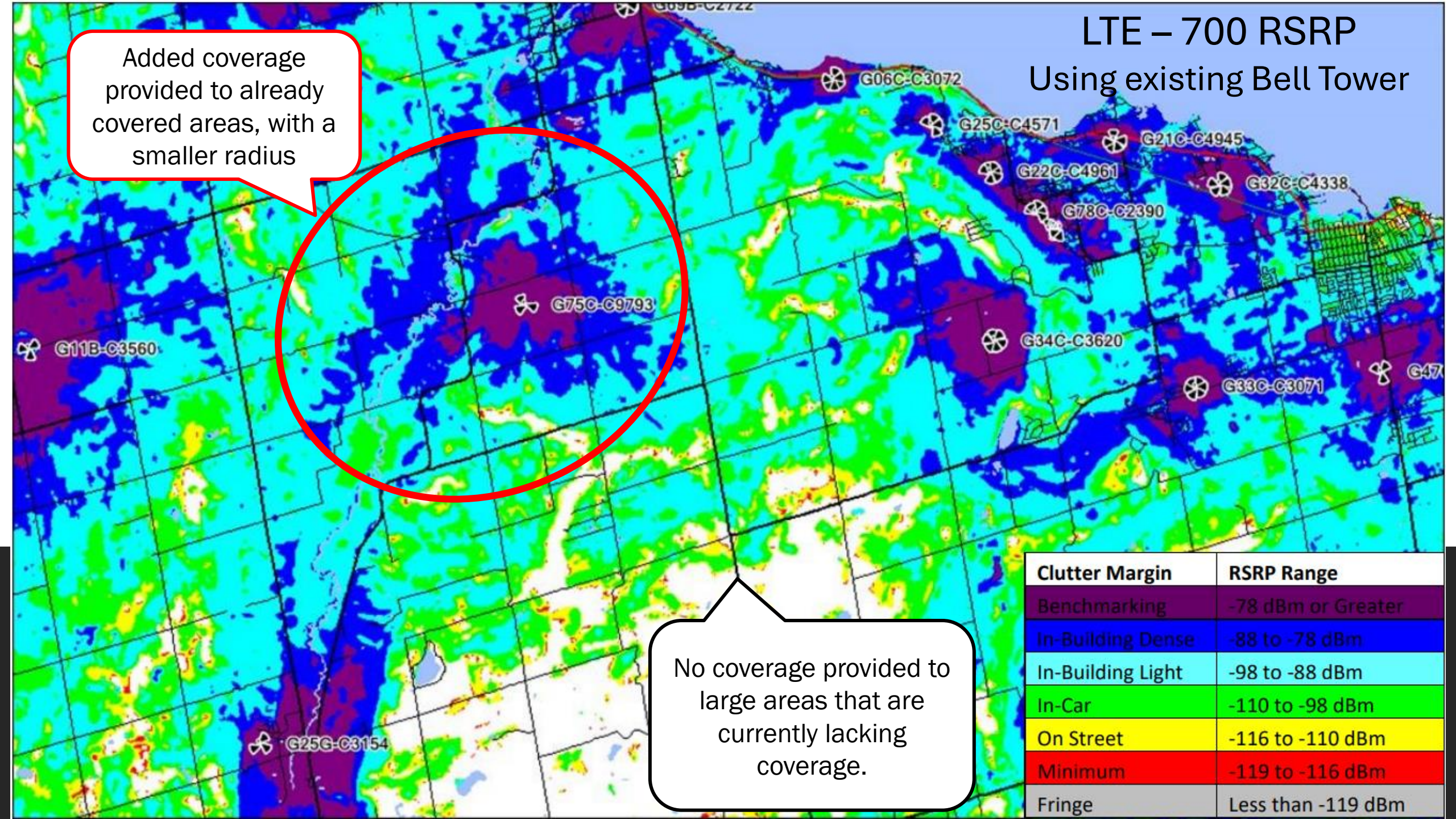
LTE – 700 RSRP Using existing Bell Tower

Added coverage provided to already covered areas, with a smaller radius



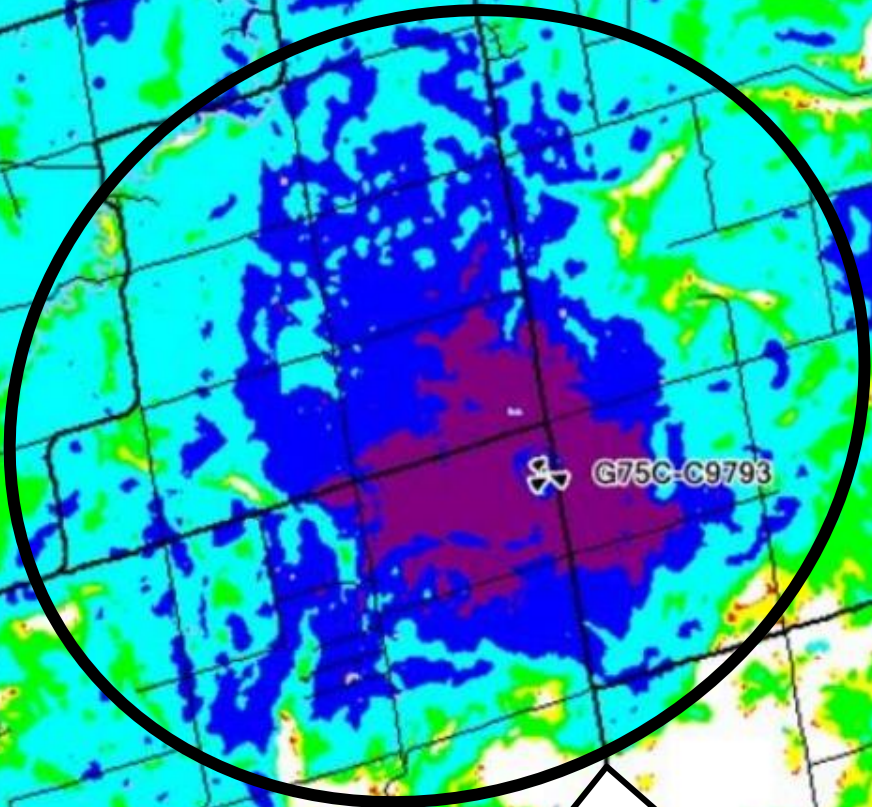
No coverage provided to large areas that are currently lacking coverage.

Clutter Margin	RSRP Range
Benchmarking	-78 dBm or Greater
In-Building Dense	-88 to -78 dBm
In-Building Light	-98 to -88 dBm
In-Car	-110 to -98 dBm
On Street	-116 to -110 dBm
Minimum	-119 to -116 dBm
Fringe	Less than -119 dBm



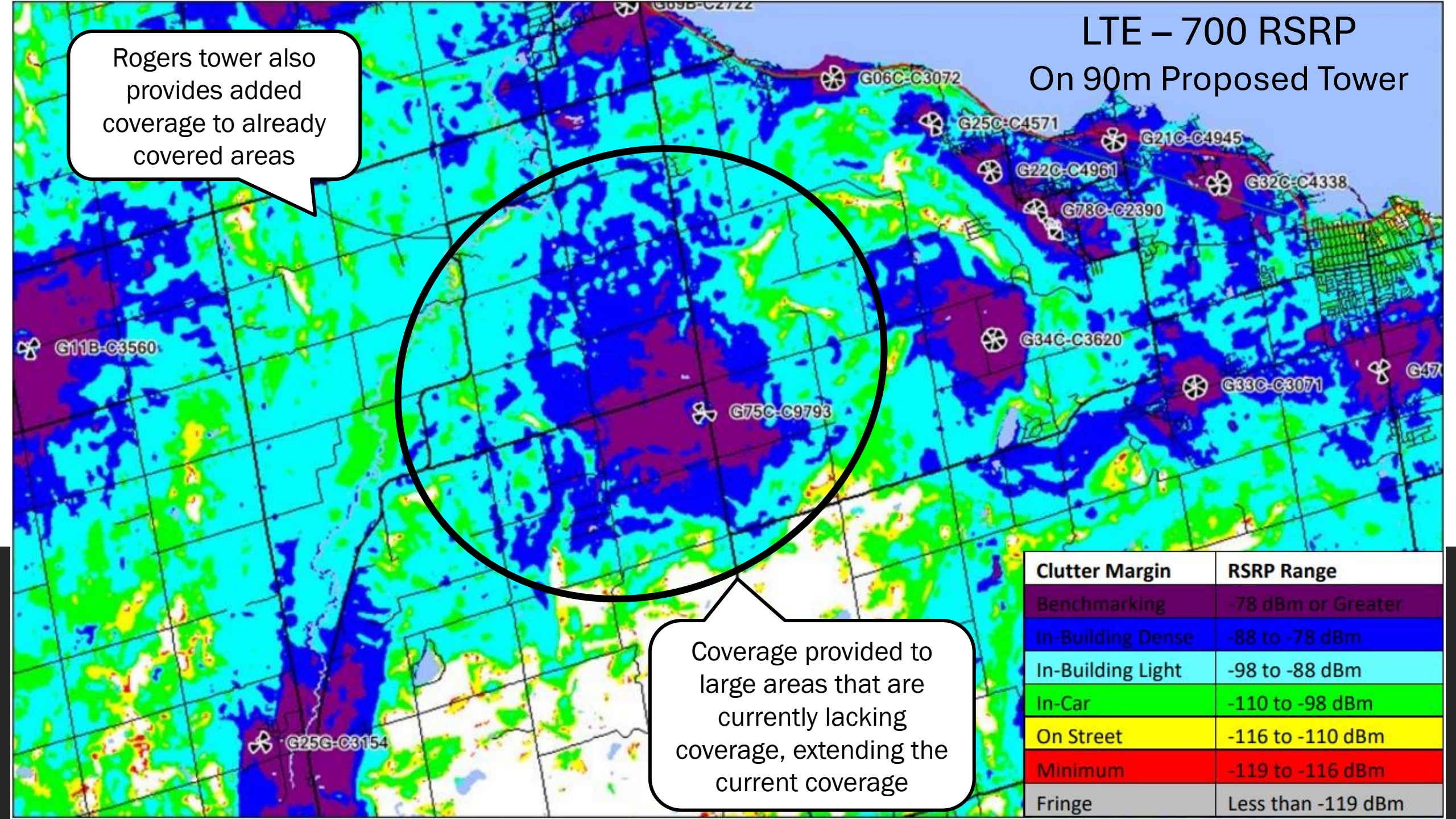
LTE – 700 RSRP On 90m Proposed Tower

Rogers tower also provides added coverage to already covered areas



Coverage provided to large areas that are currently lacking coverage, extending the current coverage

Clutter Margin	RSRP Range
Benchmarking	-78 dBm or Greater
In-Building Dense	-88 to -78 dBm
In-Building Light	-98 to -88 dBm
In-Car	-110 to -98 dBm
On Street	-116 to -110 dBm
Minimum	-119 to -116 dBm
Fringe	Less than -119 dBm

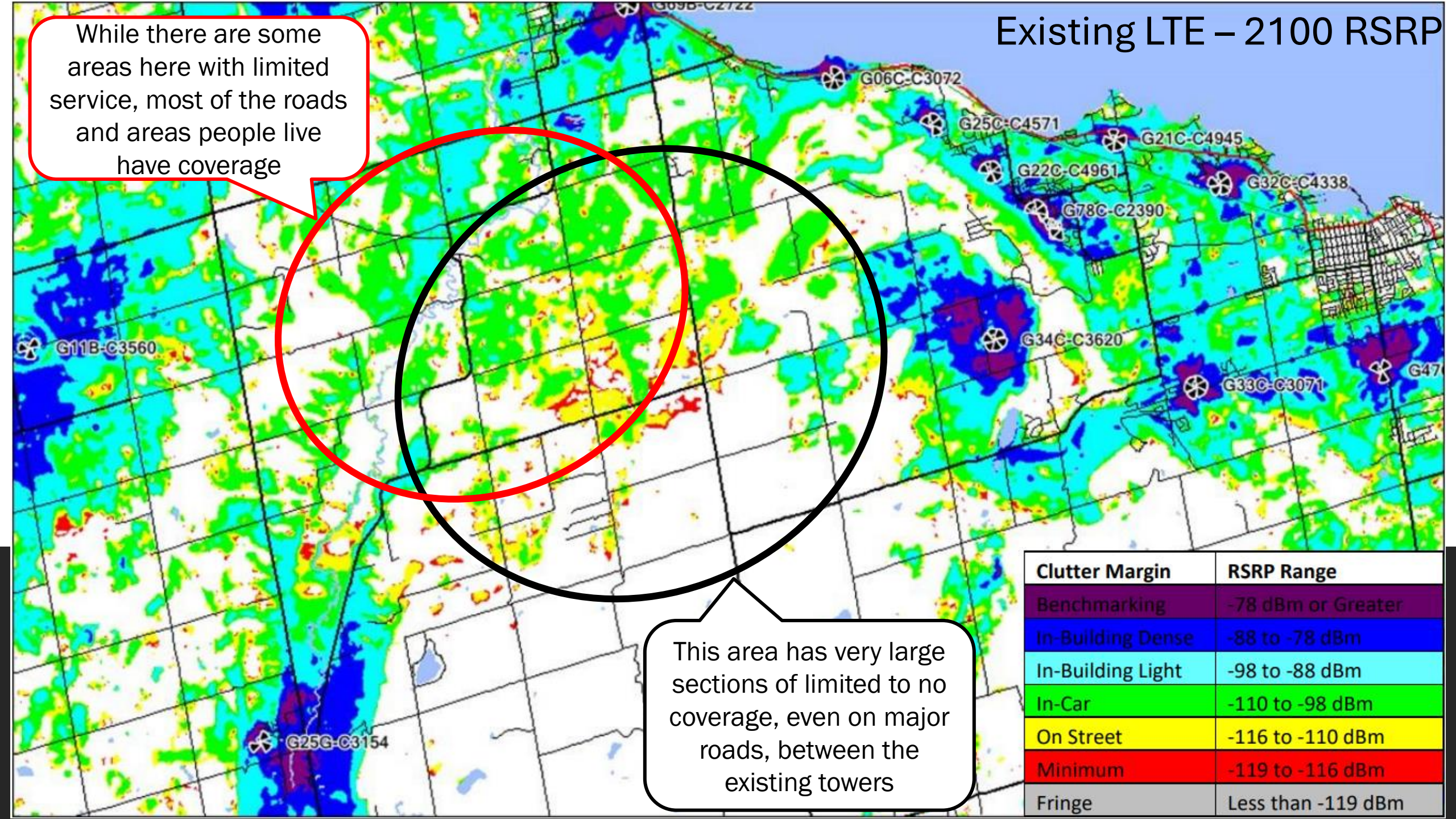


Existing LTE – 2100 RSRP

While there are some areas here with limited service, most of the roads and areas people live have coverage

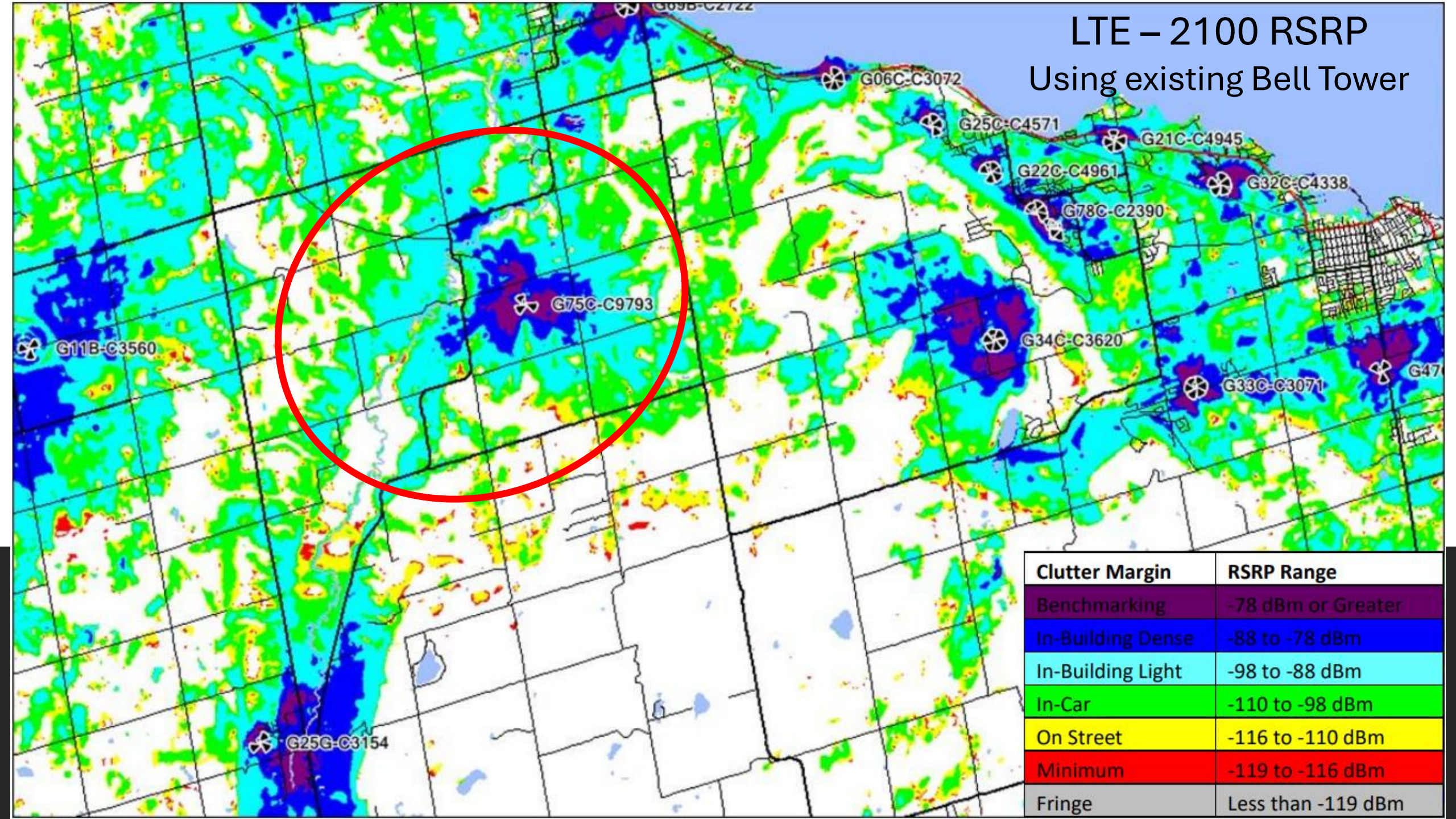
This area has very large sections of limited to no coverage, even on major roads, between the existing towers

Clutter Margin	RSRP Range
Benchmarking	-78 dBm or Greater
In-Building Dense	-88 to -78 dBm
In-Building Light	-98 to -88 dBm
In-Car	-110 to -98 dBm
On Street	-116 to -110 dBm
Minimum	-119 to -116 dBm
Fringe	Less than -119 dBm



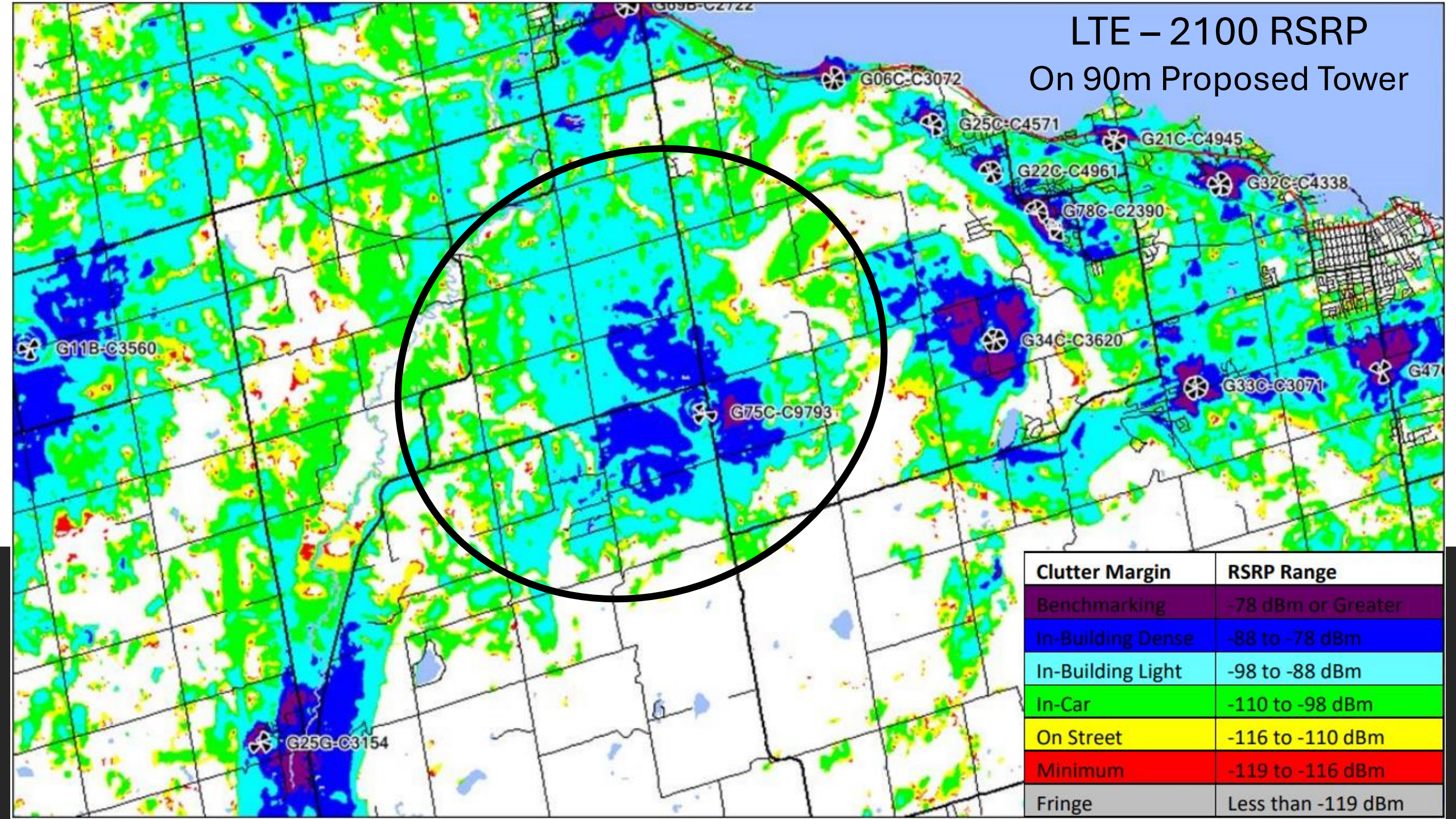
LTE – 2100 RSRP

Using existing Bell Tower



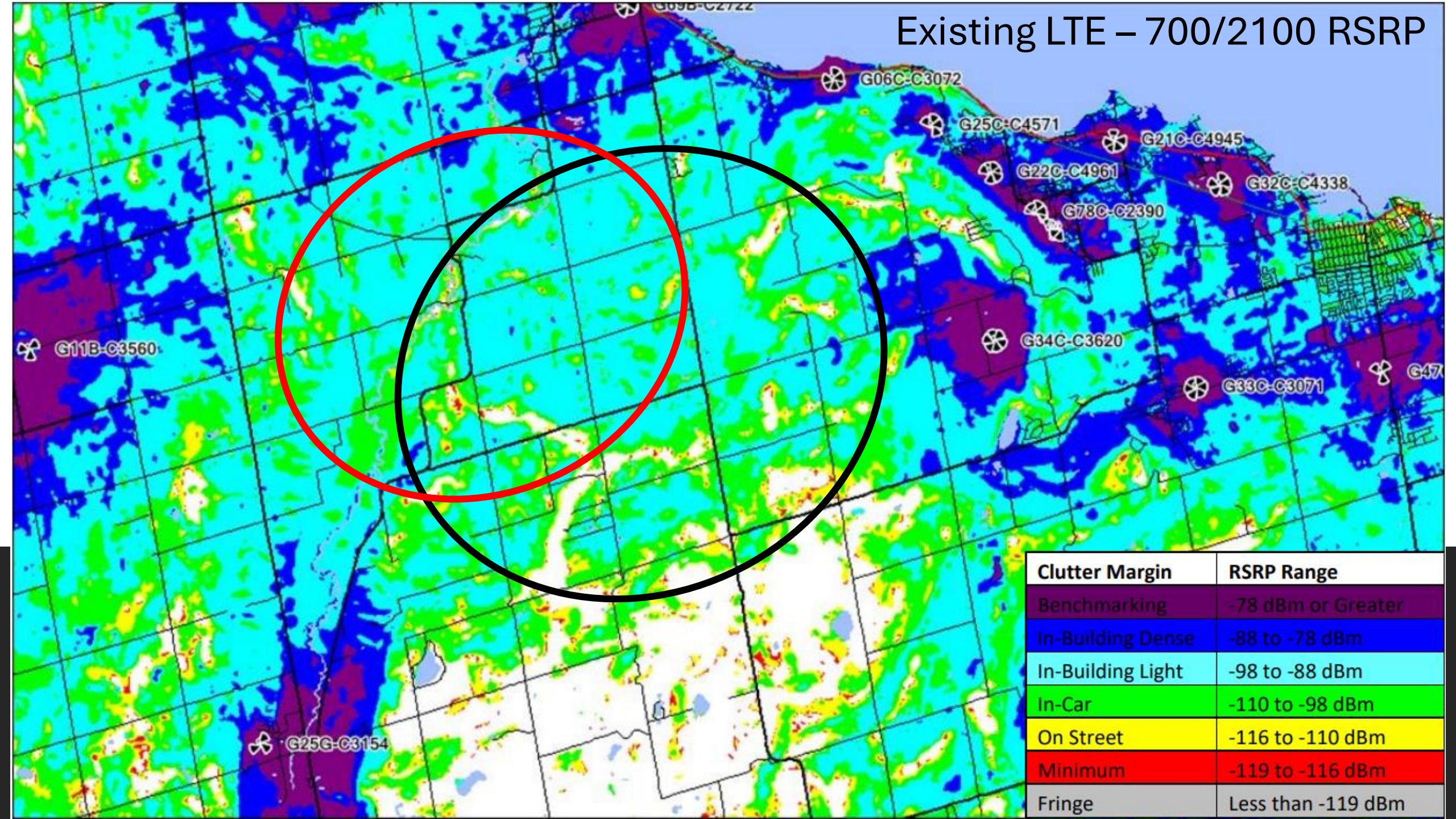
Clutter Margin	RSRP Range
Benchmarking	-78 dBm or Greater
In-Building Dense	-88 to -78 dBm
In-Building Light	-98 to -88 dBm
In-Car	-110 to -98 dBm
On Street	-116 to -110 dBm
Minimum	-119 to -116 dBm
Fringe	Less than -119 dBm

LTE – 2100 RSRP On 90m Proposed Tower



Clutter Margin	RSRP Range
Benchmarking	-78 dBm or Greater
In-Building Dense	-88 to -78 dBm
In-Building Light	-98 to -88 dBm
In-Car	-110 to -98 dBm
On Street	-116 to -110 dBm
Minimum	-119 to -116 dBm
Fringe	Less than -119 dBm

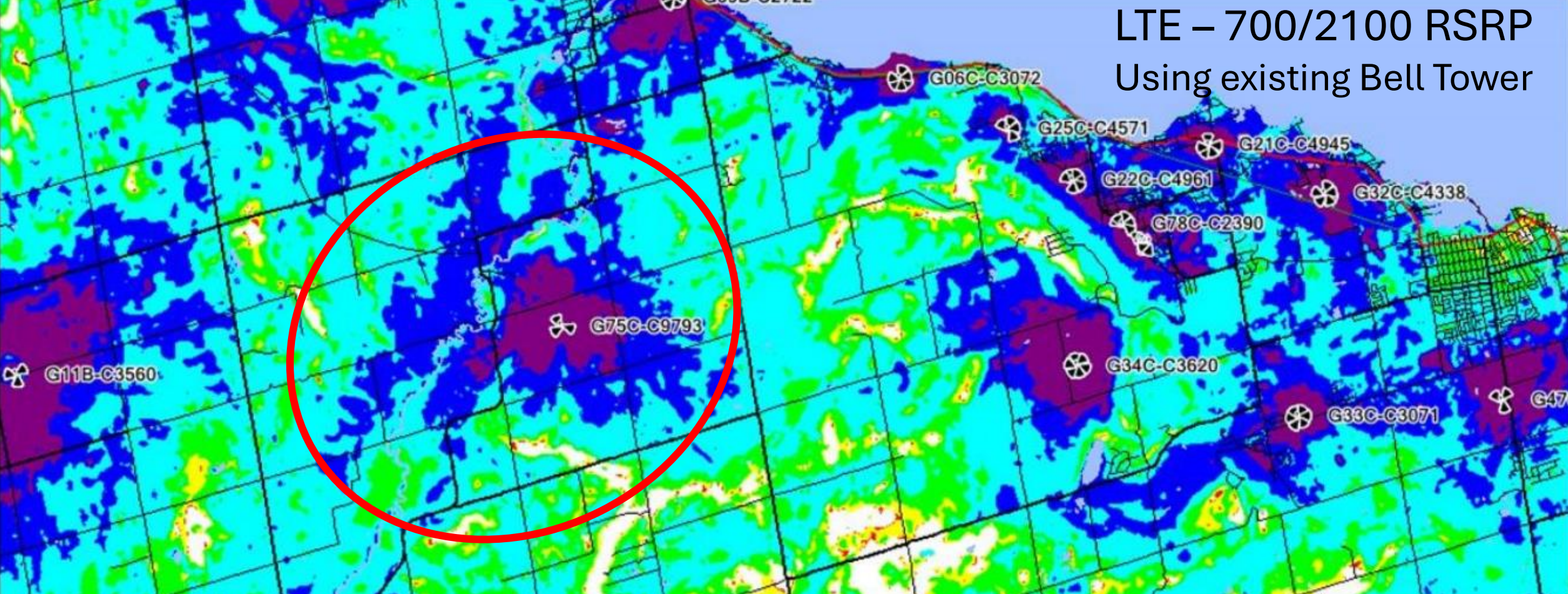
Existing LTE – 700/2100 RSRP



Clutter Margin	RSRP Range
Benchmarking	-78 dBm or Greater
In-Building Dense	-88 to -78 dBm
In-Building Light	-98 to -88 dBm
In-Car	-110 to -98 dBm
On Street	-116 to -110 dBm
Minimum	-119 to -116 dBm
Fringe	Less than -119 dBm

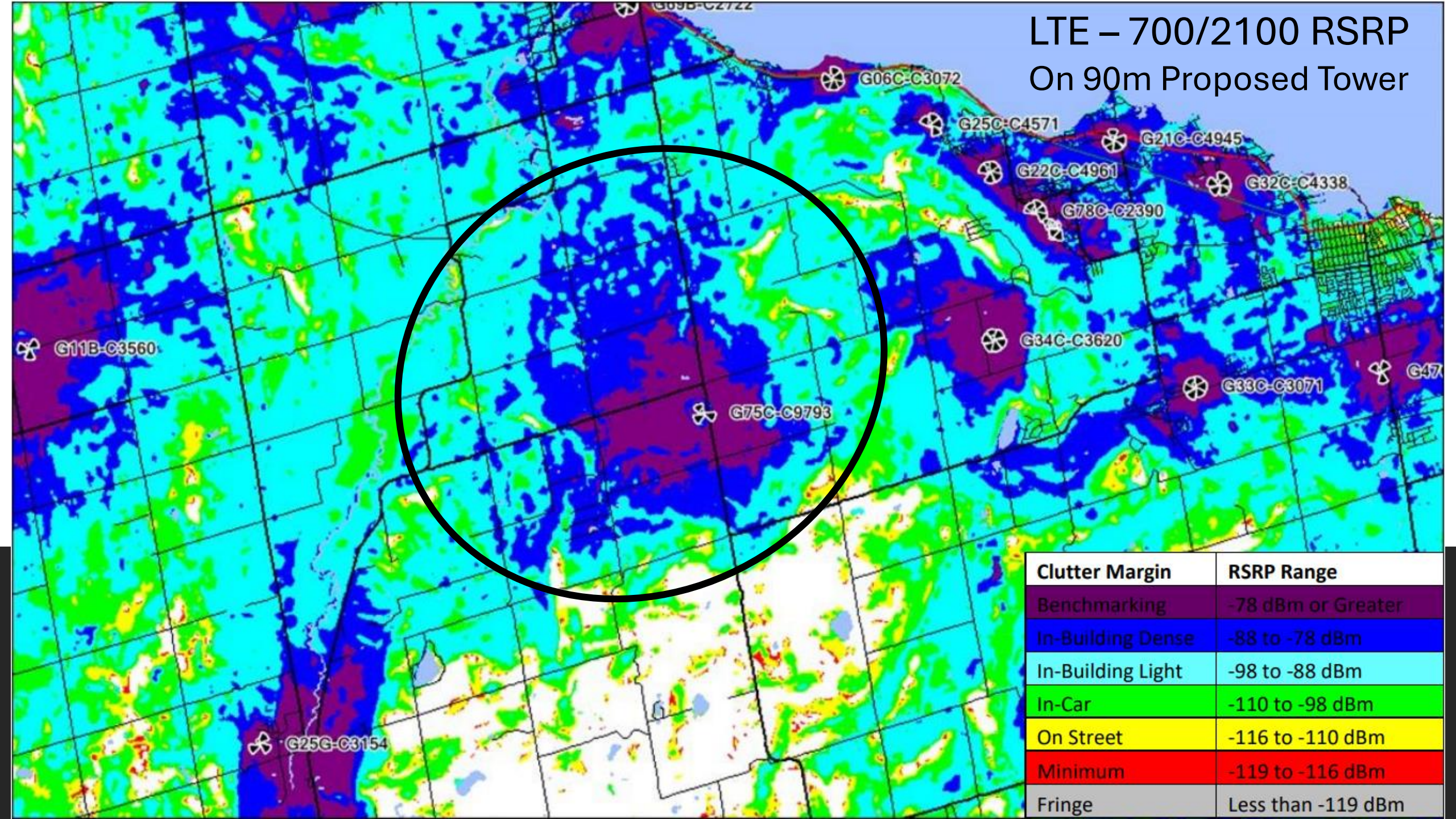
LTE – 700/2100 RSRP

Using existing Bell Tower



Clutter Margin	RSRP Range
Benchmarking	-78 dBm or Greater
In-Building Dense	-88 to -78 dBm
In-Building Light	-98 to -88 dBm
In-Car	-110 to -98 dBm
On Street	-116 to -110 dBm
Minimum	-119 to -116 dBm
Fringe	Less than -119 dBm

LTE – 700/2100 RSRP On 90m Proposed Tower



Clutter Margin	RSRP Range
Benchmarking	-78 dBm or Greater
In-Building Dense	-88 to -78 dBm
In-Building Light	-98 to -88 dBm
In-Car	-110 to -98 dBm
On Street	-116 to -110 dBm
Minimum	-119 to -116 dBm
Fringe	Less than -119 dBm