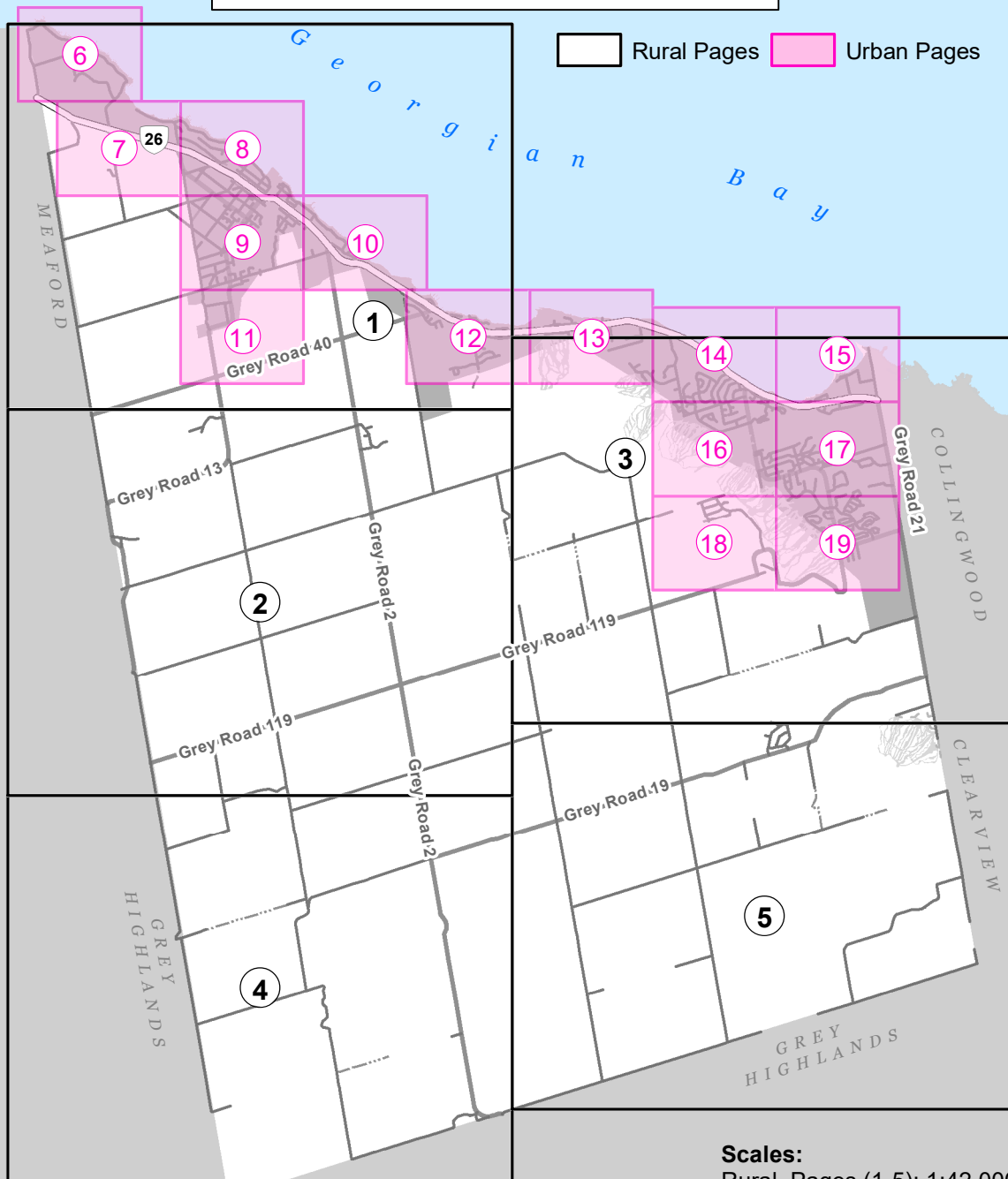




# Town of The Blue Mountains Zoning Bylaw 2018-65 Schedule 'A' 2024



Rural Pages Urban Pages



**Scales:**  
Rural Pages (1-5): 1:42,000  
Urban Pages (6-19): 1:10,000

- |   |  |
|---|--|
| Bruce Street / Marsh Street Corridor (BMC)          | General Commercial (C2)                    |
| Building Envelope                                   | Resort Commercial (C3)                     |
| <b>Zoning h Provision Overlay</b>                   |  |
| (h1) Wetland  | Harbour Commercial (C4)                    |
| (h2) Area of Natural and Scientific Interest (ANSI) | Blue Mountain Village Commercial (C5)      |
| (h3) Landfill                                       | Craileith Village Commercial (C6)          |
| (h4a) Source Water Protection                       | Rural Commercial (C7)                      |
| (h4b) Source Water Protection                       | Bruce Street / Marsh Street Corridor (BMC) |
| (h5) Sewage Treatment Plant (STP)                   | Recreation One (REC1)                      |
| 177.9 GSCA Elevation (100 yr Flood Line)            | Recreation Two (REC2)                      |
| NEC Development Control                             | Recreation Three (REC3)                    |
| See Section 1.5                                     | General Employment (M1)                    |
| Residential One (R1-1)                              | Rural Employment (M2)                      |
| Residential One (R1-2)                              | Extractive Industrial (M3)                 |
| Residential One (R1-3)                              | Development (D)                            |
| Residential One (R1-4)                              | Public Utilities (PU)                      |
| Residential One (R1-5)                              | Institutional (I)                          |
| Residential Two (R2)                                | Open Space (OS)                            |
| Residential Three (R3)                              | Wetland (WL)                               |
| Resort Residential (RR)                             | Hazard (H)                                 |
| Rural (R)   | Parking (P)                                |
| Village Commercial (C1)                             | Agricultural (A)                           |
|   | Special Agricultural (SA)                  |

**Disclaimer:**

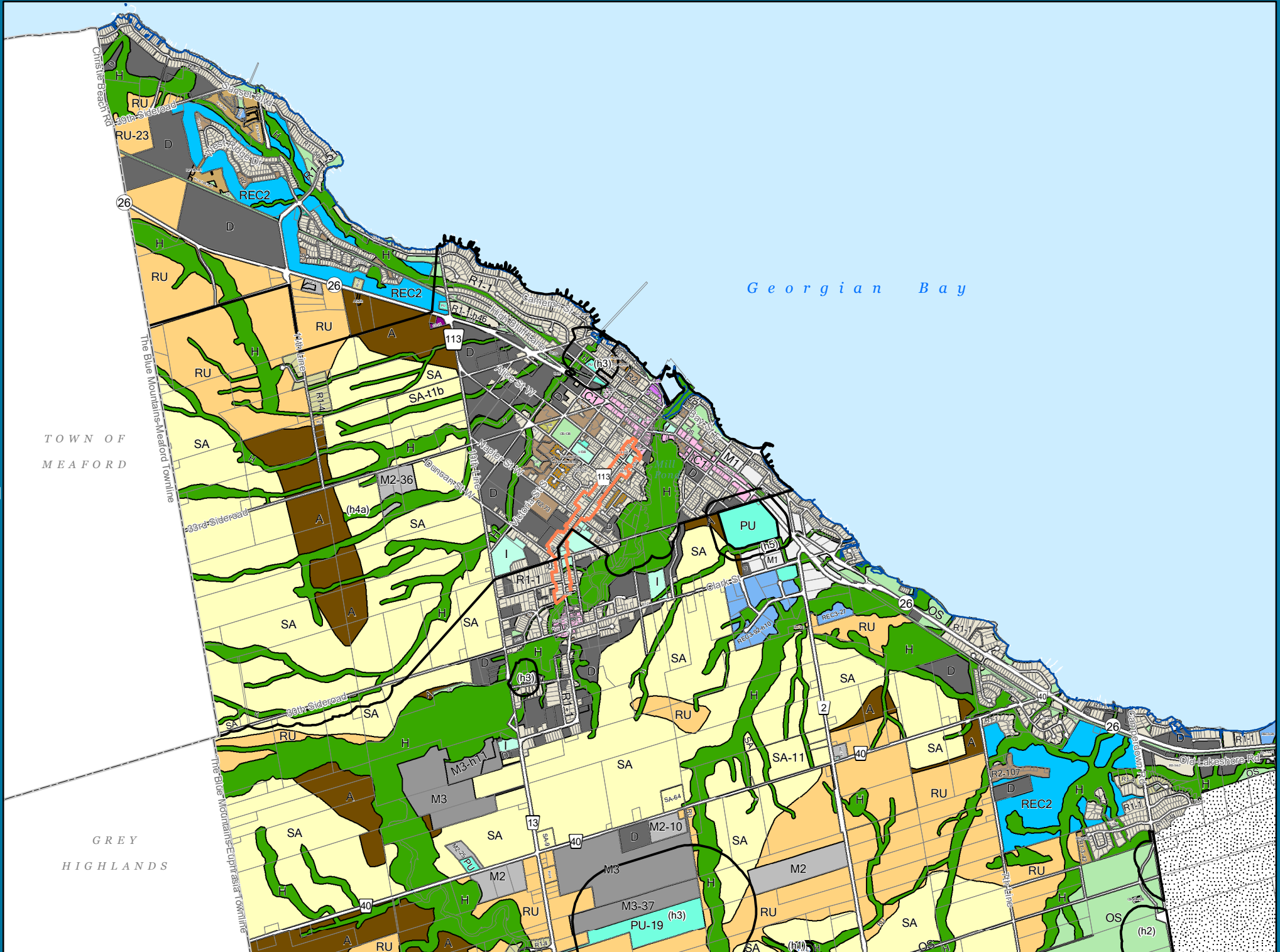
This map book is intended for reference purposes only. Information shown on this map book has been compiled from numerous sources and may not be complete or accurate and may be subject to change without notice. Contains information licensed under the Open Government Licence - Ontario and Grey County Open Data Licence.

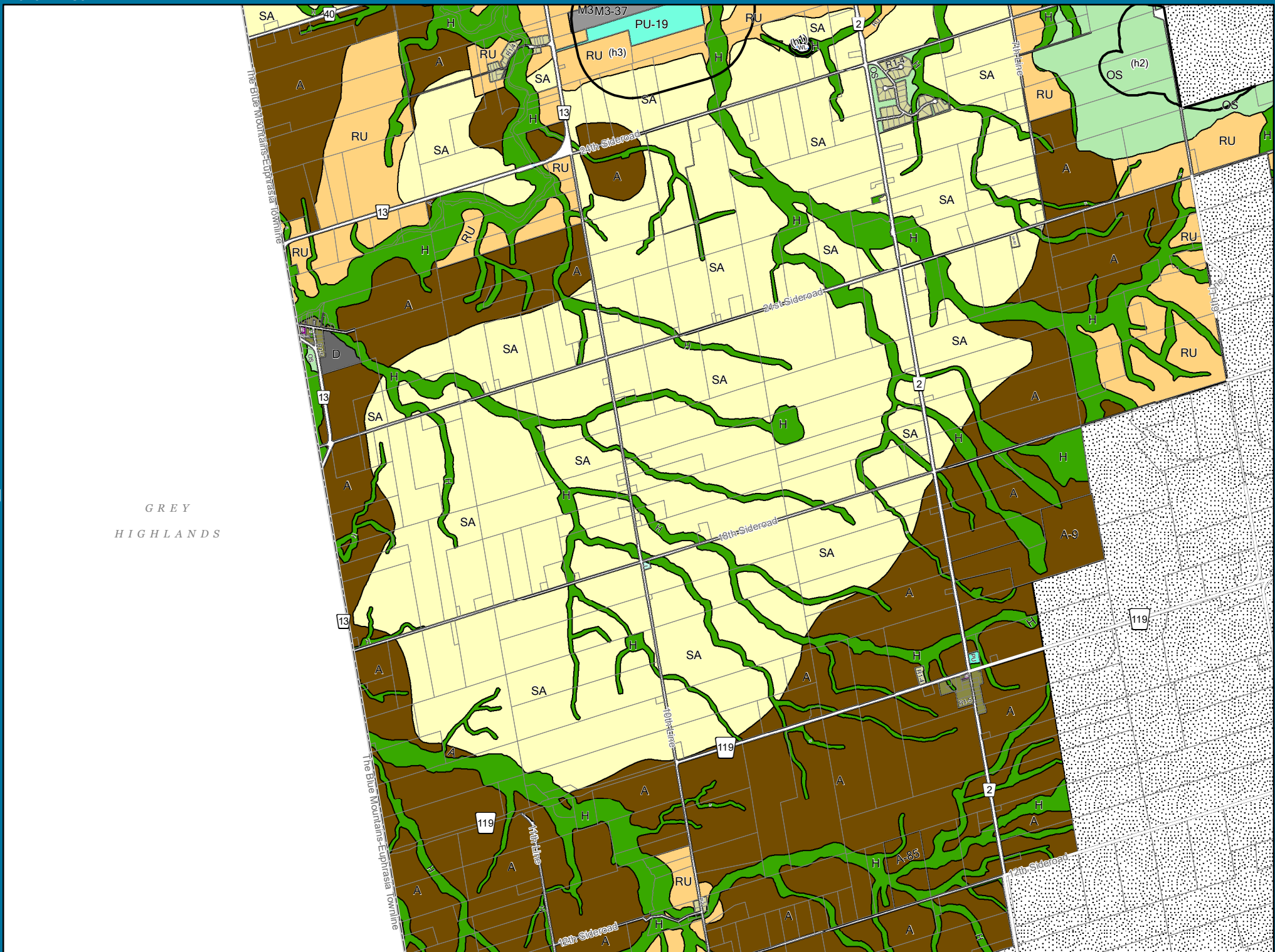
The Town of The Blue Mountains is not responsible for any errors, omissions or deficiencies in this drawing. No part of this mapbook may be reproduced, modified or transmitted to others in any way without the written permission of ©The Corporation of the Town of The Blue Mountains.

THIS IS NOT A PLAN OF SURVEY.

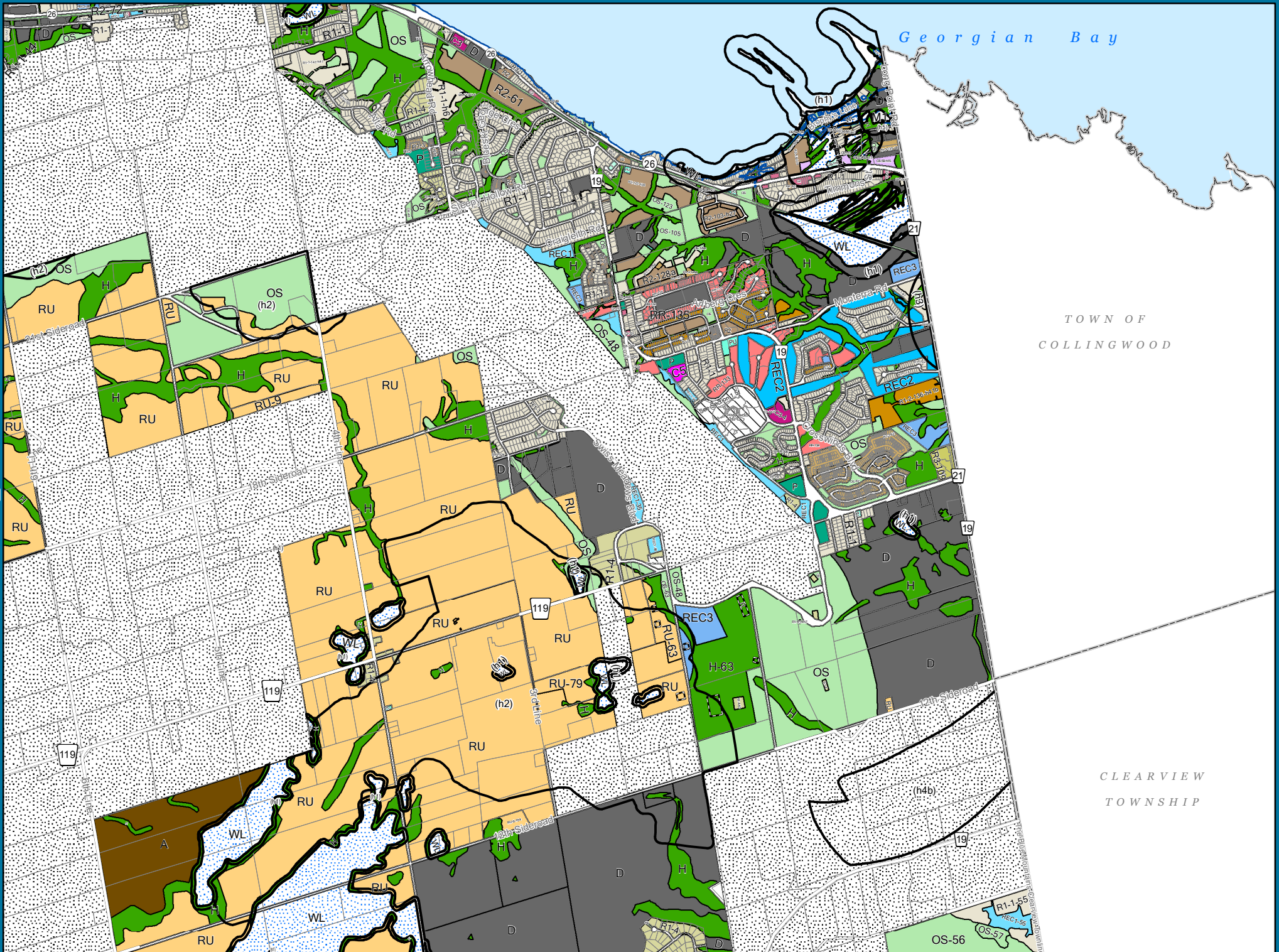
**Data Sources:**

Town of The Blue Mountains, County of Grey, County of Simcoe and Ontario Ministry of Natural Resources.  
For more information please visit [www.thebluemountains.ca](http://www.thebluemountains.ca),

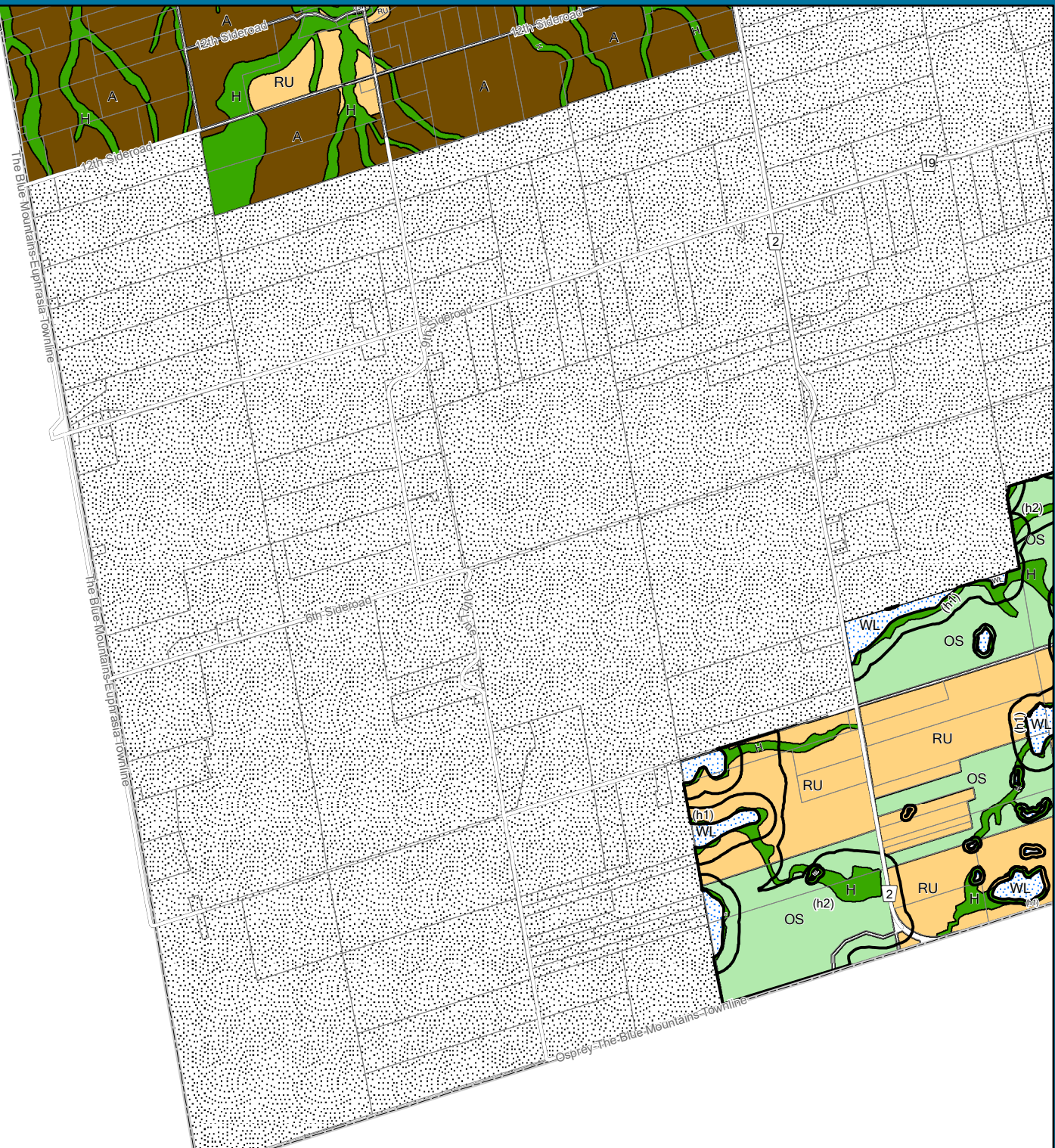


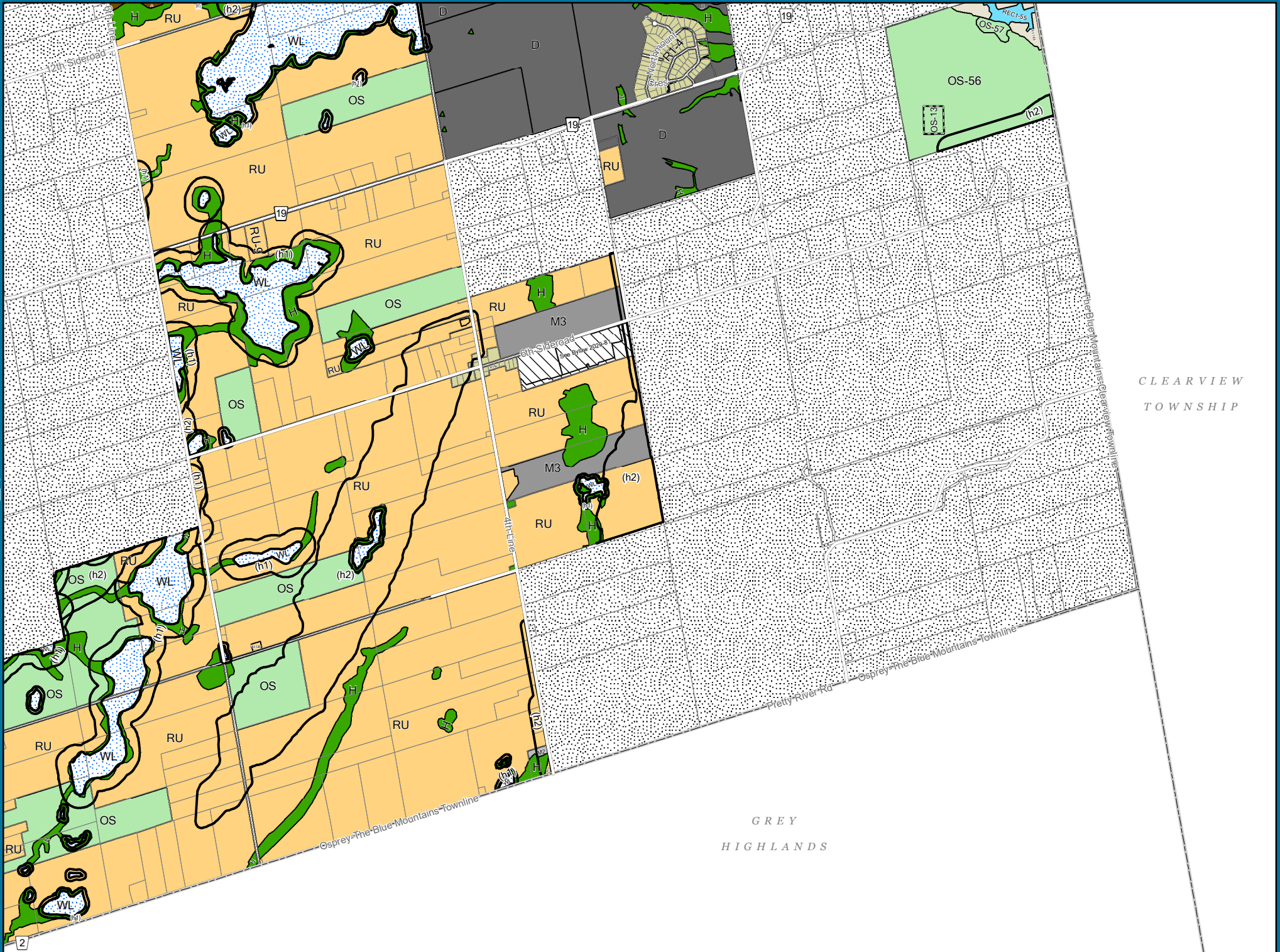


GREY  
HIGHLANDS



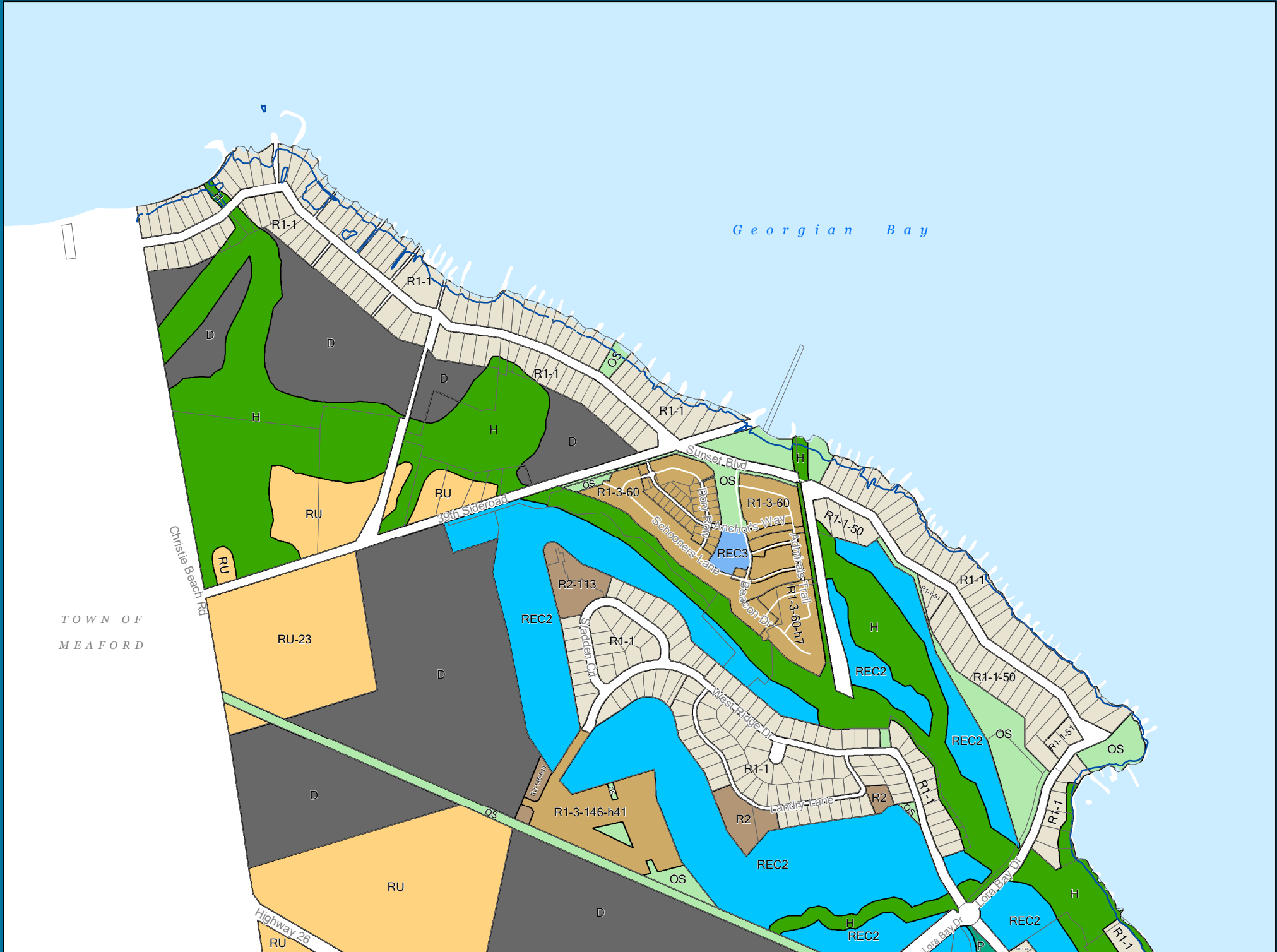
GREY  
HIGHLANDS





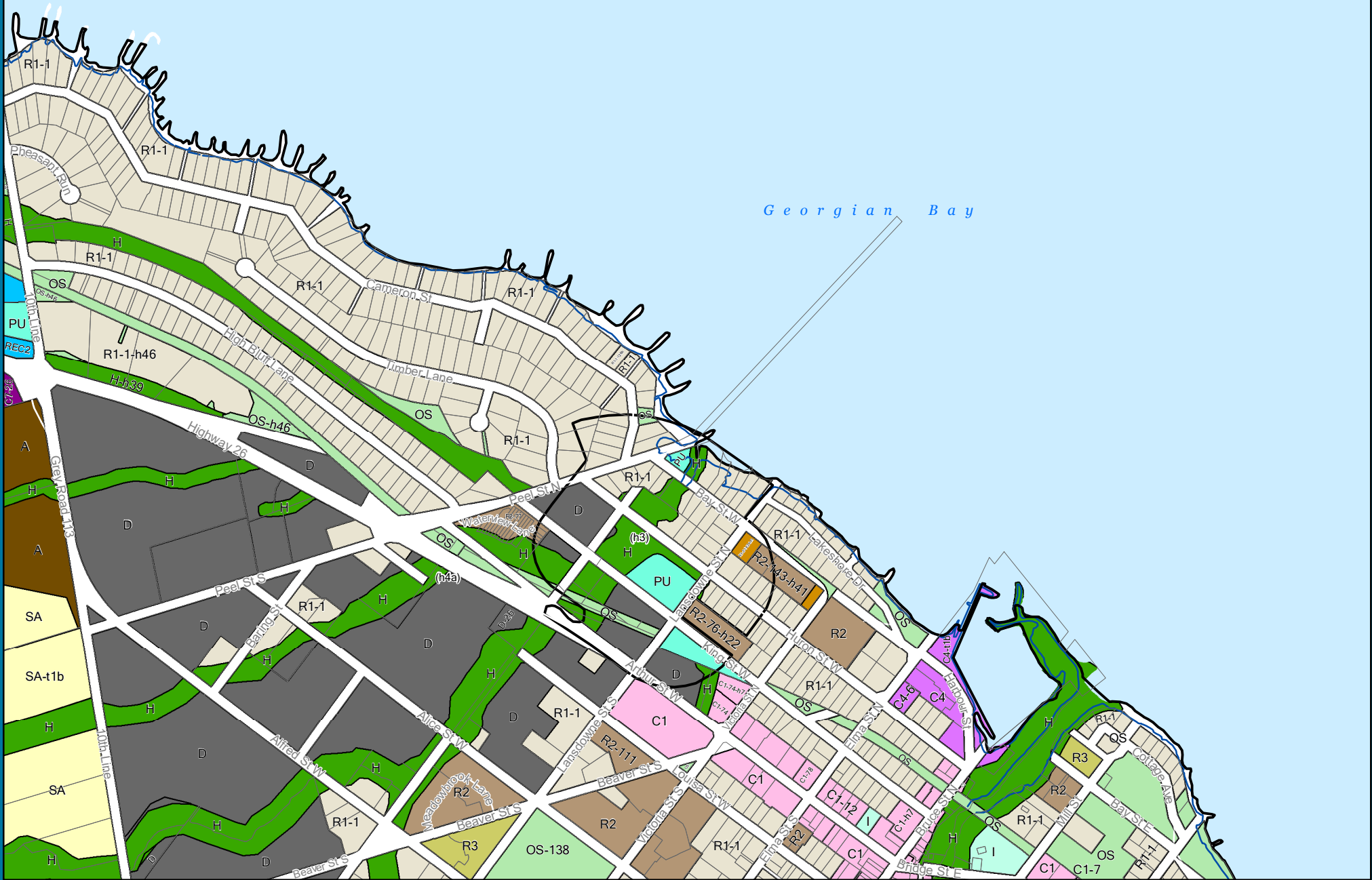
CLEARVIEW  
TOWNSHIP

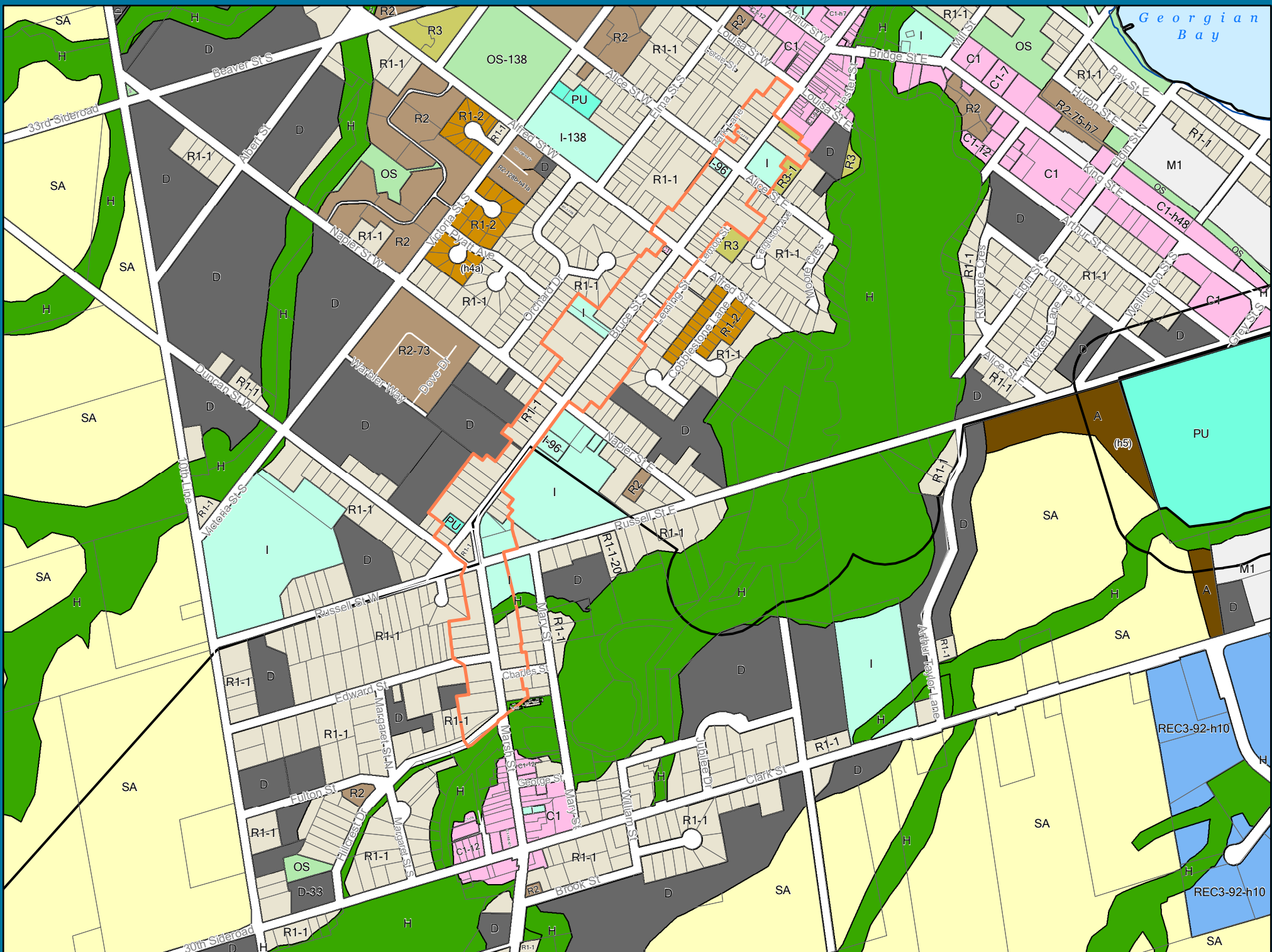
GREY  
HIGHLANDS







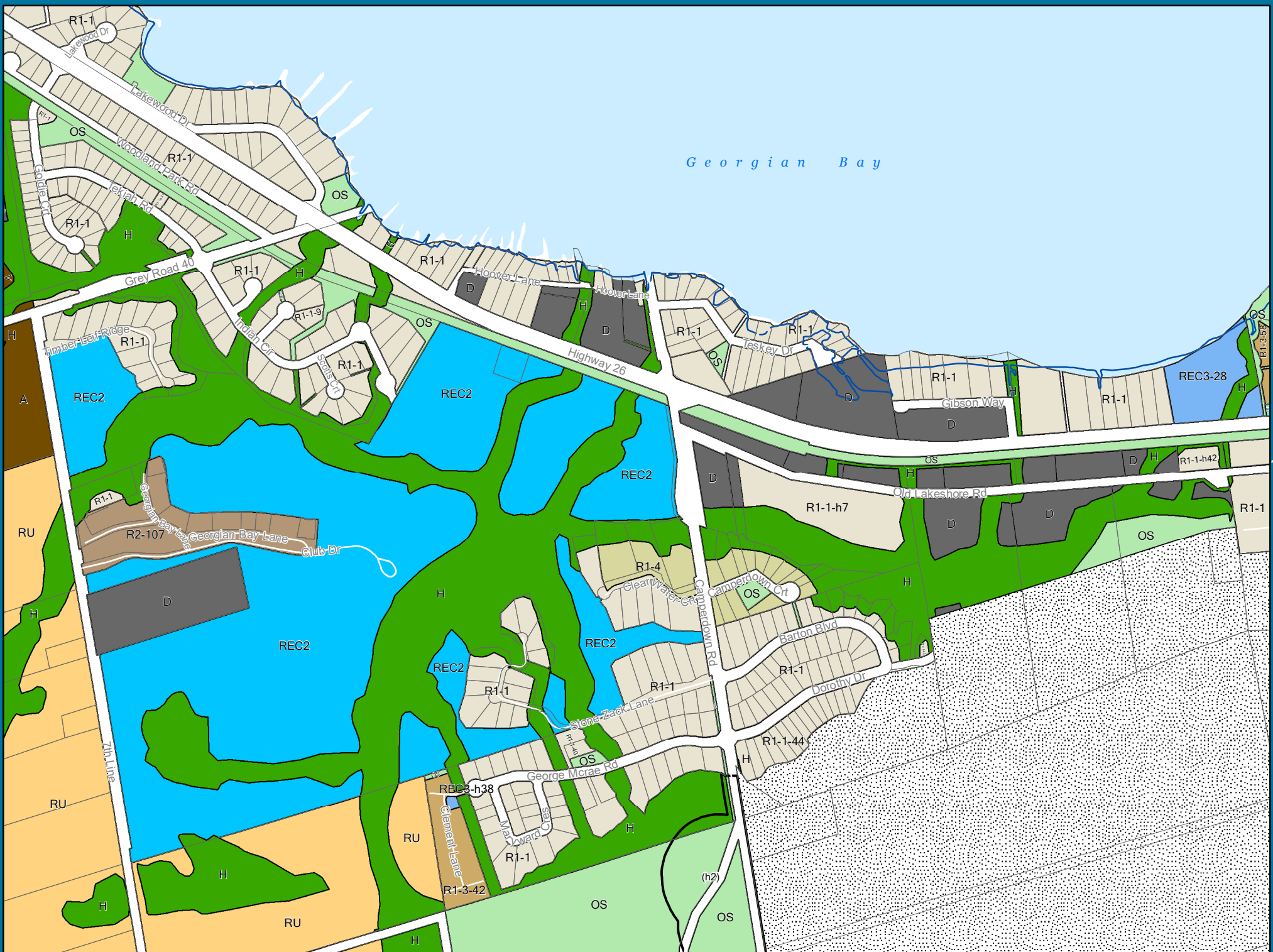




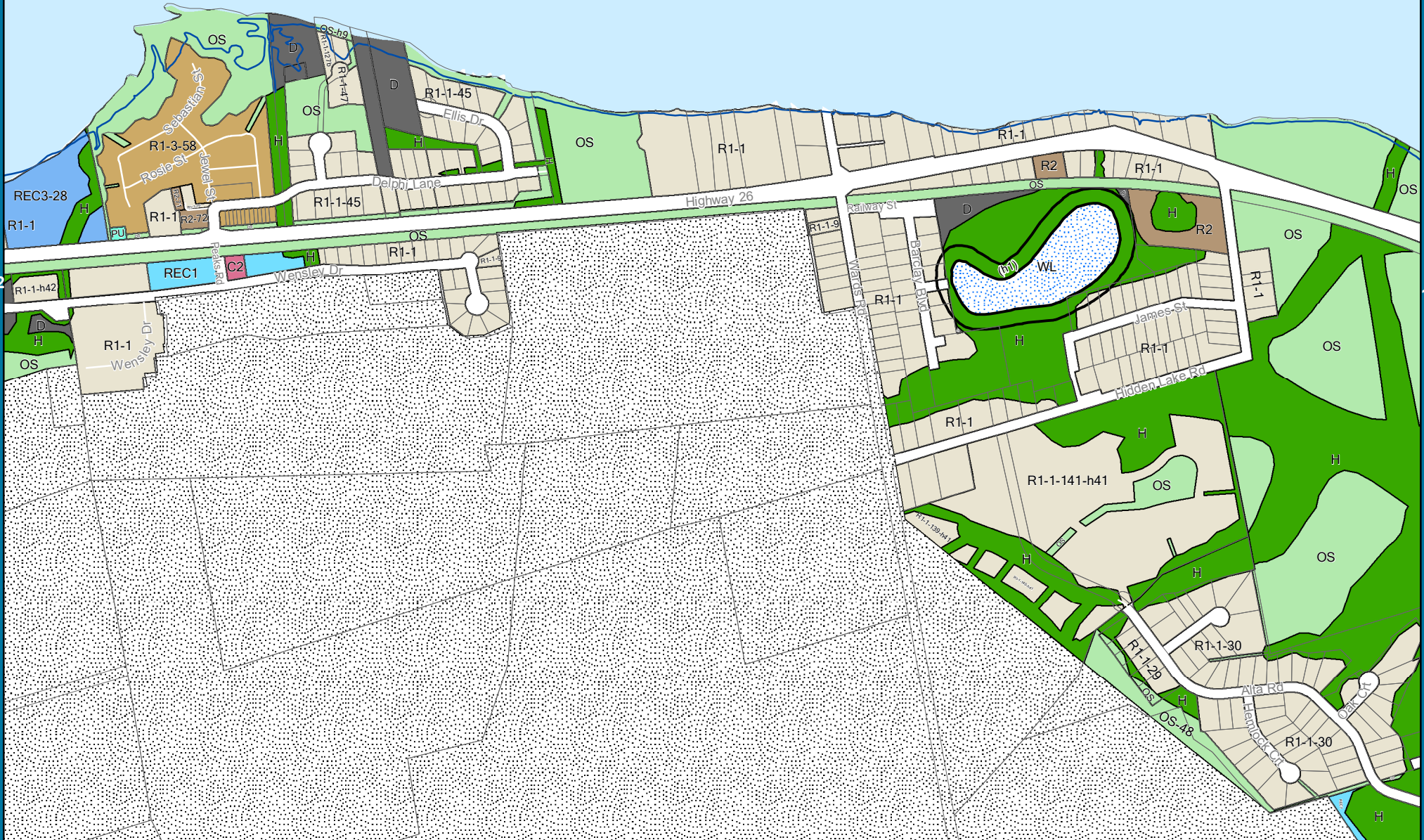


REC3-92-h10





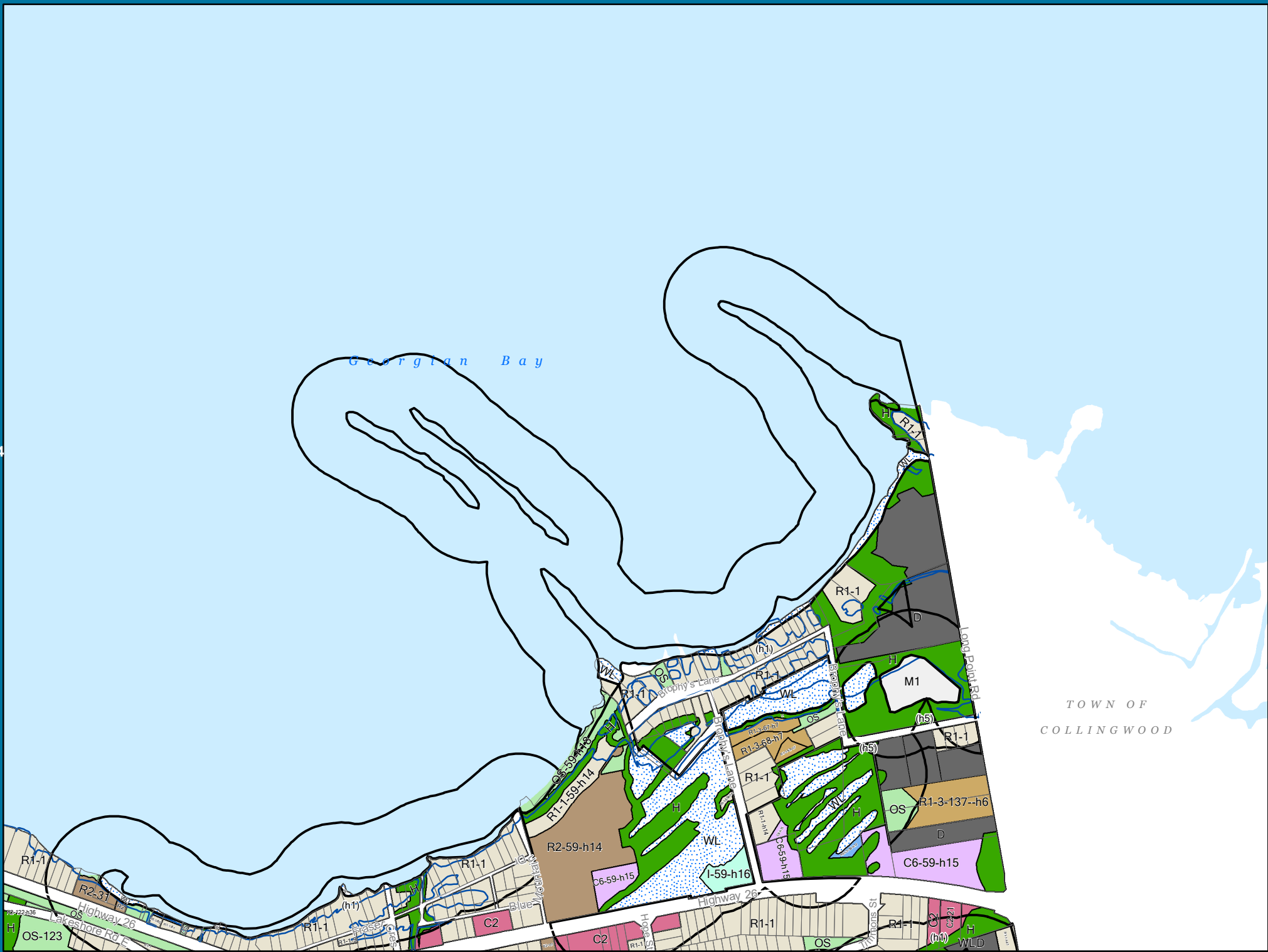
Georgian Bay





13

15



TOWN OF  
COLLINGWOOD



