

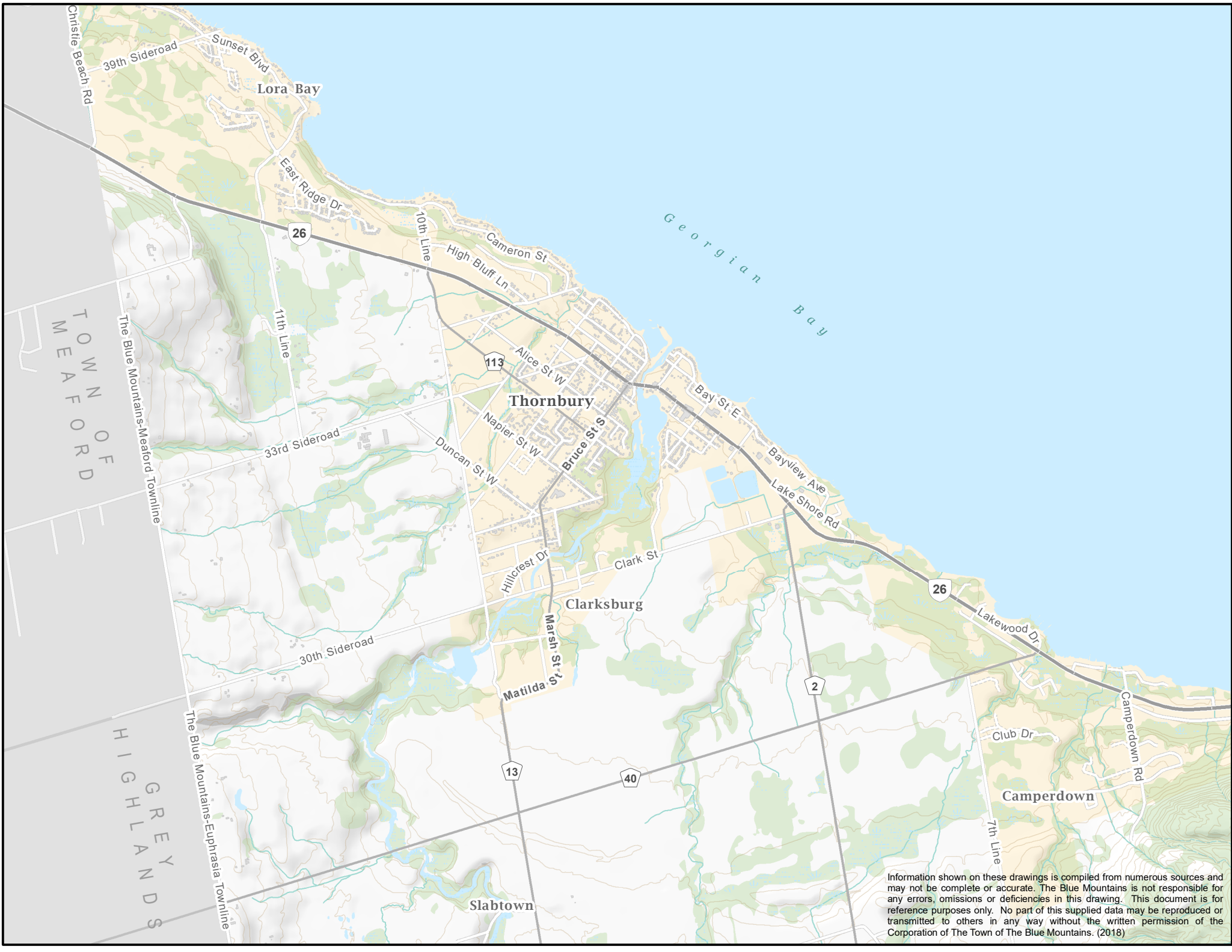
November 19, 2018

Deputation by John Ardiel on behalf of The Blue Mountains Agricultural Advisory Committee:

On behalf of the Agricultural Advisory Committee we are requesting Council to go forward with an Environmental Impact Assessment on replacing the Clendenan Bridge over the Beaver River on the Tenth Line. This bridge has been closed to vehicular traffic for several years now & is negatively impacting agricultural traffic as well as affecting safe traffic flow through Clarksburg.

A lot of orchard /farm equipment must travel from farm to farm & since the bridge closure now has to travel through the core of Clarksburg. This is especially emphasized during the fall harvest when large volumes of apples are being hauled both ways to local storages, packing & processing plants. In our opinion a bridge replacement would be very beneficial to both the agricultural community & the residents of The Blue Mountains in terms of safety & traffic flow.

Thank you for your consideration.



TOWN OF  
MEAFORD

HIGHLANDS

Information shown on these drawings is compiled from numerous sources and may not be complete or accurate. The Blue Mountains is not responsible for any errors, omissions or deficiencies in this drawing. This document is for reference purposes only. No part of this supplied data may be reproduced or transmitted to others in any way without the written permission of the Corporation of The Town of The Blue Mountains. (2018)