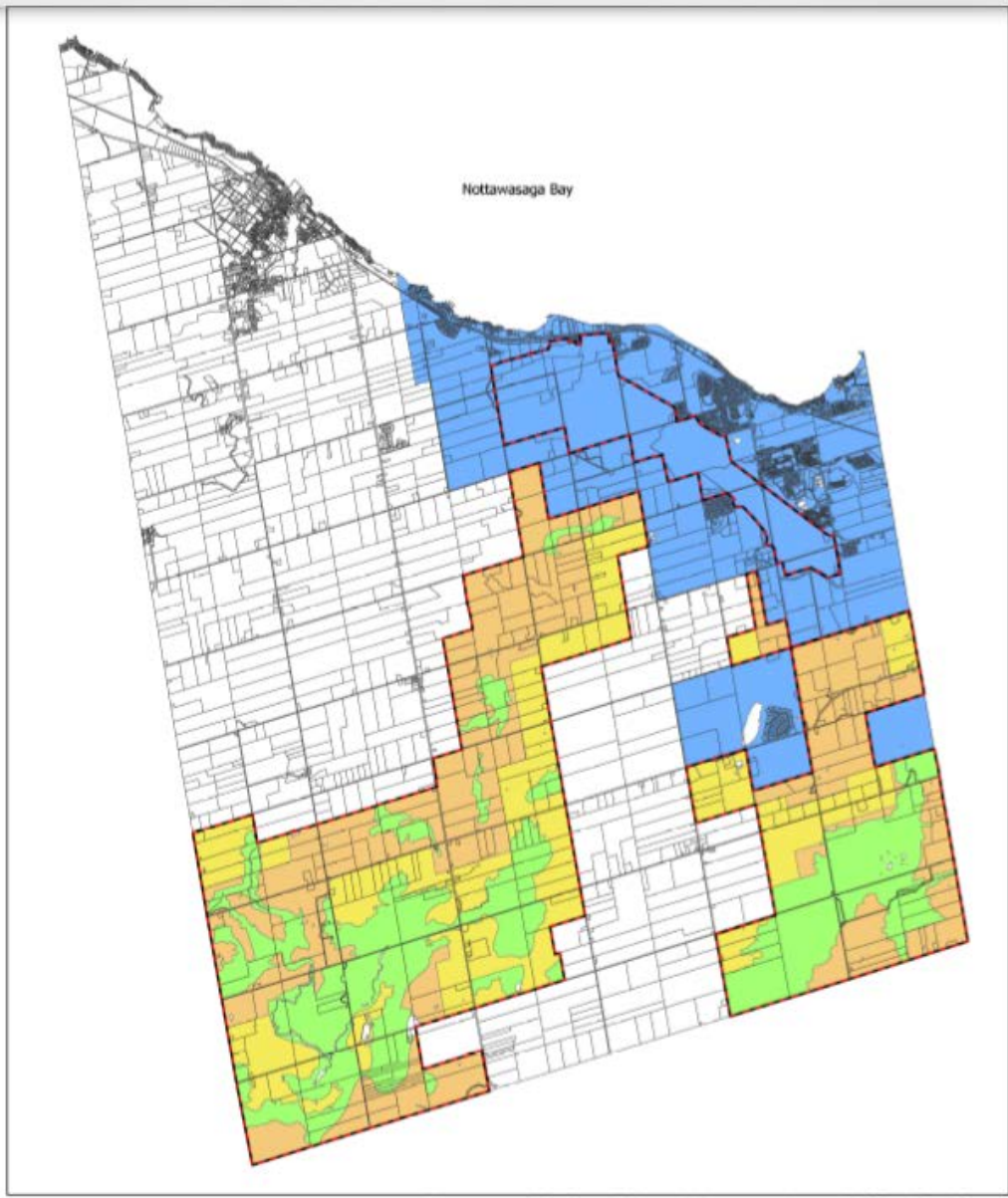


NEW RESOLVE
PRESERVING PRETTY RIVER
PROVINCIAL PARK

PRESENTATION BY DR. DONALD AVERY
INDEPENDENT RESEARCHER AND AUTHOR
MEMBER OF THE FRIENDS OF THE PRETTY RIVER VALLEY

MAJOR ISSUES

- 1/WHY IS THE PRETTY RIVER PROVINCIAL PARK UNIQUE?
- 2/HOW WAS PRETTY RIVER PARK PROTECTED IN THE PAST?
- 3/IN WHAT WAYS DOES THE GIBRALTAR PIT EXPANSION POSE AN ECOLOGICAL AND SOCIAL THREAT TO THE PARK?
- 4/WHAT ARE THE POLICY OPTIONS FOR THE TOWN OF THE BLUE MOUNTAINS?



Town of The Blue Mountains Official Plan

LEGEND

- Escarpment Natural
- Escarpment Protection
- Escarpment Rural
- Escarpment Recreational
- Area Affected by Development Control Regulations

Appendix Map 'F'
Niagara Escarpment Plan Area and
Development Control Area





Eden Oak Pit

Bates Pit

Proposed Application:
To Change the Official Plan
To Re-Zone

6th Sideroad

3rd Line

PRETTY RIVER AS NODAL PARK

- SPECIAL CATEGORY: ONLY 9 CREATED IN 1985
- DISTINCTIVE FEATURES OF THE ESCARPMENT IN THE 10 MAJOR REGIONS OF THE 725 KM AREA
- **ORIENTATION:** PARK ACTIVITIES, AND POINTS OF INTERESTS
- **EDUCATION:** NATURAL AND CULTURAL VALUES
- **INTERPRETATION:** AREAS OF NATURAL AND SCIENTIFIC INTERESTS;)
ROLE IN UNESCO BIOSPHERE RESERVE SYSTEM
- **ONLY NODAL PARK IN GEORGIAN BAY TRIANGLE**

PROTECTION FOR ESCARPMENT PARKS

- PRETTY RIVER PROVINCIAL PARK IS PART OF THE NIAGARA ESCARPMENT PARK SYSTEM (160)
- ONLY SUCH DEVELOPMENT OCCURS AS IS **COMPATIBLE WITH THE NATURAL ENVIRONMENT**
- SHARED STEWARDSHIP RESPONSIBILITIES: NEC AND LOCAL GOVT.
- LAND USE RESTRICTIONS ON AGGREGATE EXTRACTION

OTHER PROTECTIVE FACTORS

- HIGH STATUS AS BIOSPHERE PARK—FEATURED IN TEN YEAR UNESCO REVIEW (2022—NEW FORMAT)
- ACCEPTED PRACTICE OF ONTARIO GOVERNMENT NOT TO LOCATE GRAVEL PITS NEXT TO PROVINCIAL PARKS
- PRETTY RIVER PARK POTENTIAL AS CATALYST FOR RECREATIONAL ACTIVITY AND ECOTOURISM IN TOBM

TOBM OFFICIAL PLAN AND GREEN OPTIONS

- “THE OVERALL INTENT **TO ENHANCE THE QUALITY OF LIFE...[AND] SUPPORT THE TOURISM AND RECREATION SECTOR IN THE TOWN**”
- “REINFORCE KEY POLICIES IN THE OFFICIAL PLAN THAT HAVE WORKED WELL...**DESIREABLE DEVELOPMENT IN THE RIGHT PLACES**”
- “BASED ON **THE PROMINENCE OF THE NIAGARA ESCARPMENT** THE TOWN SERVES AS A FOUR SEASONS RECREATIONAL AND TOURIST DESTINATION “
- “**MINIMIZE THE TOWN’S ECOLOGICAL FOOTPRINT AND THE IMPACTS OF GROWTH BY ENCOURAGING DEVELOPMENT THAT IS BASED ON THE PRINCIPLES OF SUSTAINABLE DEVELOPMENT.**”

MAJOR PROBLEMS WITH EXPANSION

- REMOVAL OF TRADITIONAL BUFFER FROM EXISTING EDEN OAKS PIT
- PLANS TO CLEAR-CUT REGIONALLY SIGNIFICANT FOREST (4 HA.) AND FRAGMENT PRETTY RIVER BASED FOREST SYSTEM
- DISRUPT WILDLIFE CORRIDOR-THREAT TO ENDANGERED SPECIES
- NEW PIT OBSTRUCT ACCESS TO PRETTY RIVER PROVINCIAL PARK
- CUMULATIVE IMPACT OF LONG TERM AGGREGATE MINING

ARGUMENTS AGAINST EXPANSION

- MAJOR FLAWS IN STAFF REPORT PRS-18-18 REMAIN UNRESOLVED
- LACK OF EVIDENCE TO SUBSTANTIATE MHBC CLAIMS ABOUT AGENCY ENDORSEMENTS FOR PIT EXPANSION
- MHBC TECHNICAL REPORTS REMAIN UNCHALLENGED BY OUTSIDE EXPERTS
- NARROW FOCUS ON LEGAL ISSUES NOT WELFARE OF THE COMMUNITY

ENVIRONMENTALIST VICTORIES: ROCKFORT (2010) AND NELSON (2012) QUARRY CASES

- EFFECTIVE PEER REVIEW—Sufficient Doubt Proponent Demonstrated “NO UNACCEPTABLE IMPACT.”
- “THE BURDEN OF PROOF IS BORN BY THE PROPONENT”
- MYTH OF INTERIM USE: “ IMPLIES THAT LAND WILL BE RETURNED TO THE SAME USE ...DURING A SHORT PERIOD OF TIME.” (Gord Miller)
- PROTECT SPECIES AT RISK –(2008 Act) ANIMALS, BIRDS, AMPHIBIANS, PLANTS
- CELEBRATE NATURE HERITAGE TREASURES SUCH AS MOUNT NEMO (BURLINGTON ESCARPMENT)

NO MAJOR ECONOMIC ASSET IN DEVELOPING SUBJECT LANDS (GIBRALTAR PIT)

- GRAVEL OF MARGINAL QUALITY—MANY LOCAL SUPPLIERS
- COMPANY'S ECONOMIC CONTRIBUTION TO THE ToBM RELATIVELY INSIGNIFICANT
- GREY SAUBLE CONSERVATION RECOMMENDATION AGAINST BELOW THE WATER-TABLE EXTRACTION

- ECONOMIC BENEFITS OF ECOTOURISM FAR GREATER

IN 2018 OUTDOOR RECREATION INDUSTRY IN THE US GENERATED MORE THAN \$367 BILLION-EXCEEDING COMBINED TOTAL FOR RESOURCE SECTOR (OIL, GAS, MINERALS, LUMBER).

FUNDAMENTAL GOALS

- SAVE SIGNIFICANT WOODLANDS AND PRESERVE WILDLIFE CORRIDOR
 - ENSURE ECOLOGICAL WELL-BEING OF ENDANGERED/THREATENED SPECIES
 - PROVIDE AREA FOR GATEWAY TO PRETTY RIVER PROVINCIAL PARK
(FUTURE VISITORS-RECREATIONAL CENTRE)
- * PROVIDE A MODEL FOR CREATIVE RELATIONSHIPS BETWEEN LOCAL GOVERNMENT, THE RESOURCE SECTOR AND THE ENVIRONMENTAL COMMUNITY

SUMMARY

- 1/THE PRETTY RIVER PROVINCIAL PARK IS AN SPECIAL PART OF THE NIAGARA ESCARPMENT BIOSPHERE RESERVE
- 2/THE PRETTY RIVER PARK HAS BEEN A PROTECTED NODAL PARK SINCE 1973—KEY ROLE IN LOCAL ECOTOURISM
- 3/GIBRALTAR PIT EXPANSION A SERIOUS ECOLOGICAL AND SOCIAL THREAT TO THE OPERATION OF THE PR PARK WITH LITTLE ECONOMIC BENEFIT
- 4/THE TOWN OF THE BLUE MOUNTAINS MUST NOT ESTABLISH THE DANGEROUS PRECEDENT—**THAT GRAVEL PITS CAN ENCROACH ON ESCARPMENT NODAL PARKS**