

Ministry of Natural Resources and Forestry

Delphi Point ANSI

Backgrounder

Town of Blue Mountains

May 27, 2019

Outline

Background:

- What is an ANSI?
- MNRF role in ANSIs
- How are they selected?
- How are they protected?

Delphi Point ANSI:

- Why ANSI?
- Recent Interactions
- Potential Impacts

ANSI Program

Area of Natural & Scientific Interest = ANSI

- Features important for natural heritage protection, appreciation, scientific study or education
- Determined by a science-based system
- Each ANSI has an ANSI checklist file which documents the importance of an ANSI within a region of Ontario.
- ANSI files are considered open files (can amended from time to time as new information becomes available)
- Apply to private and publicly-owned lands
- 2 types:
 1. *Earth Science ANSI* – geological in nature & consist of some of the most significant representative examples of the bedrock, fossil & landforms in Ont.
 2. *Life Science ANSI* – significant representative segments of Ontario's biodiversity & natural landscapes (specific types of forests, valleys, wetlands, etc.)

How are ANSI's Protected?

Roles & Responsibilities

- MNRF
 - Provides the subject-matter expertise to identify the significance of, and boundaries for, ANSIs across Ontario using a science-based classification system
 - Provide advice to landowners, municipalities or other affect parties
- Municipalities
 - As planning authorities, use the information provided by MNRF in a local setting to determine the appropriate level of protection using zoning by-laws and other land use planning techniques

Delphi Point Earth Science ANSI



Delphi Point Earth Science ANSI

Background

- Mid-1970's - initially delineated in by MNR
- Bedrock area is “extremely fossiliferous” (approx. 450 million years ago)
- Shale bedrock has high diversity of species & significant number of well preserved fossils
- 1978 - MNRF “confirmed” Delphi Point as Provincially Significant Earth Science ANSI
- Considered one of the most important fossil sites in Ontario and possibly Canada



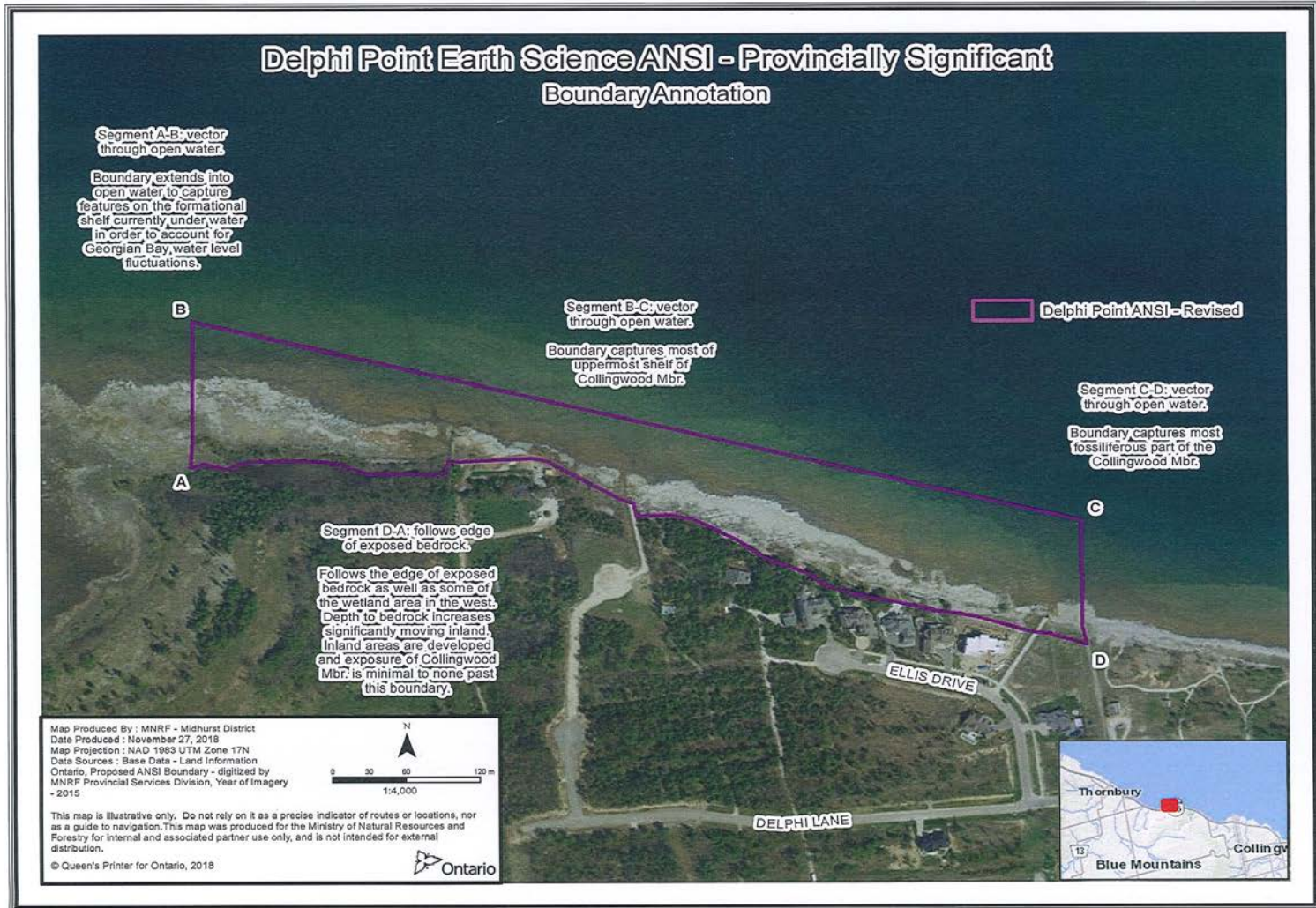
Delphi Point Earth Science ANSI

Recent Interactions

- 2017 – Delphi Waterfront Management Plan
 - MNRF requested to provide input in support of the Town’s planning process
- 2017 site inspection
 - MNRF’s Senior Conservation Geologist concluded that the 1978 ANSI boundary should be amended to reflect seasonal changes to the shoreline over time
- March 2019
 - ANSI boundary amended and notification provided

Delphi Point Earth Science ANSI

Revised Boundary



Delphi Point Earth Science ANSI

Earth Science Inventory Checklist

Sensitivity

- Fossil collection and development within the ANSI could significantly impact the site
- Any development within the ANSI boundary should be prohibited.
- Any activity which removes or obstructs the bedrock units containing the fossiliferous shale beds should be discouraged within the ANSI. This includes the construction of shoreline erosion prevention features (groynes, etc), docks, 'sea walls,' marina facilities, boathouses, etc..
- It is imperative that for the site to retain its provincially significant standing, its inherent features, being the bedrock and its contained fossil record must be retained in a natural and unobstructed way.

QUESTIONS?