

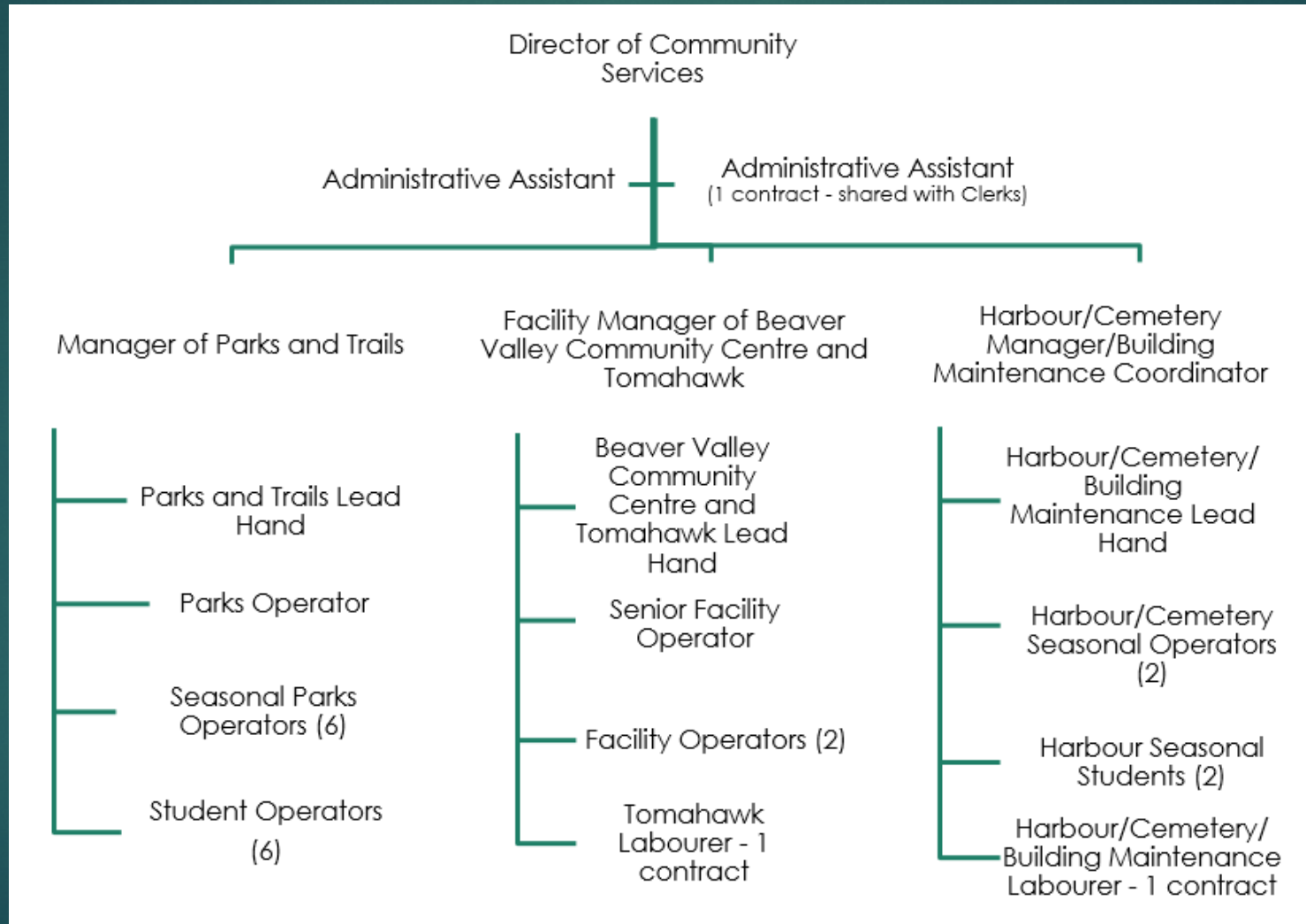


Community Services

COUNCIL ORIENTATION

FEBRUARY 20, 2019

Organizational Chart



Administration

- ▶ Thornbury BIA (staff resources)
- ▶ Special Event Permits and Logistical Meetings
- ▶ Public Transit
- ▶ Cycling and Share the Road Opportunities
- ▶ Town Owned Properties and Waterfront Access Points
- ▶ Youth Initiatives
- ▶ Seniors Initiatives

Transit

- ▶ Collaboration with the Town of Collingwood, Wasaga Beach, Blue Mountain Resort and Blue Mountain Village Association to provide public transit in the Craigleith and Blue Mountain Village area
- ▶ In 2018, approximately 41,229 riders used the Collingwood/Blue Mountains Transit Link
- ▶ Regional Transportation Task Force: Better Bus Hours Pilot (9 month pilot project) to provide consistent transit service across municipalities

Special Events

- ▶ In 2018 staff reviewed and provided permits for 12 Special Events
 - ▶ Heart and Stroke Big Bike
 - ▶ TD Cycling Event
 - ▶ Blue Mountains Gran Fondo
 - ▶ Clarksburg Children's Festival
 - ▶ Cycle for Sight
 - ▶ Canada Day Celebrations
 - ▶ Beaver Valley Fall Fair
 - ▶ Centurion Cycling
 - ▶ Growling Beavers
 - ▶ CIBC Run for the Cure
 - ▶ Mountains Run
 - ▶ Olde Fashioned Christmas
- ▶ All applications are viewed by:
 - ▶ Community Services
 - ▶ Roads Division
 - ▶ Fire Department
 - ▶ Local OPP
 - ▶ Grey County EMS
- ▶ Staff work closely with OPP on road closures, event routes and traffic control measures
- ▶ Logistical meetings are held for large and multi-regional events
 - ▶ Centurion Cycling
 - ▶ Blue Mountains Gran Fondo

Parks

- ▶ 9 Waterfront Properties
- ▶ 5 River Shoreline Properties
- ▶ 1 Dog Park
- ▶ 5 Recreational Parks
 - ▶ 1 Skateboard Park
 - ▶ 3 Double Tennis Courts
- ▶ 18 Passive Parks
- ▶ 99 Acres of Undeveloped Open Space
- ▶ Maintenance of Municipal Properties
 - ▶ Cemetery, Town Hall, Library, Fire Halls and Harbour
- ▶ Winter Snow Removal
 - ▶ Town Hall, Hester Street Parkette, Library, Cemetery, BVO, Chamber of Commerce Office, Dog Park, Smith Memorial Park, and portion of the Georgian Trail's winter traffic areas
- ▶ Maintenance of BIA flower baskets and street banners

Sports Fields

- ▶ Soccer Fields
 - ▶ 3 Regulation sized soccer pitches
 - ▶ 2 Mini soccer pitches
 - ▶ Used primarily by the Blue Mountain Soccer Club (BMSC) for minor leagues
- ▶ Baseball Diamond
 - ▶ 3 Diamonds
 - ▶ Used primarily by the Beaver Valley Athletic Association (BVAA) for minor leagues

Trails

- ▶ 43 Kilometers of Town maintained trails
 - ▶ 22 Kilometers of trails throughout developments in the municipality
 - ▶ 21 Kilometers of Georgian Trail
- ▶ Trails generally open in April and are closed at the end of October
- ▶ Trails are inspected monthly
- ▶ Staff provide maintenance and upgrades to all trails

Tomahawk Golf Course

- ▶ 18 hole par 3 course
- ▶ Open mid May to November 1 annually
- ▶ \$8.00 per round (Proposed \$10.00 in 2019) (\$275.00 for the season)
- ▶ Approximately 5,342 rounds were played in 2018
- ▶ 15 seasonal memberships were purchased in 2018

Harbour

- ▶ 250 slips available for seasonal boaters
- ▶ Operations 7 days per week from Victoria Day Long weekend thru Thanksgiving
- ▶ Fuel and Pump-out Service
- ▶ Water and Power on Docks
- ▶ Waiting list of 64 vessels:
 - ▶ 4 – for vessels 21' and smaller
 - ▶ 12 – for vessels 22' – 27'
 - ▶ 19 – for vessels 28' – 35'
 - ▶ 29 – for vessels 36' and larger

Cemetery

- ▶ Year round interment services available
- ▶ 35 interments in 2018
 - ▶ 10 Standard casket interments
 - ▶ 20 Cremation interments in Plots
 - ▶ 5 Cremation interments in Niches
- ▶ Stone Orchard Software (SOS) contains interment records to date
- ▶ Working on entering historical plot purchase data into SOS
- ▶ Working on entering historical plot transfer data into SOS
- ▶ Internal Roadways are to be extended into the new sections

Beaver Valley Community Centre

- ▶ The Beaver Valley Community Centre (BVCC) is a licensable venue that offers a large hall, small hall, bar service area, and a certified kitchen. The full facility has a maximum standing capacity of 430 people (366 for licenced events). This facility is directly connected to the Beaver Valley Arena, which can be combined to provide additional space for larger events.
- ▶ BVCC was booked 329 days in 2018
- ▶ Accessible entry and washrooms
- ▶ Hall Rentals - 10 regular user groups
- ▶ Pickle Ball hours per month – 160

Arena

- ▶ The Beaver Valley Arena offers an ice surface that is 195' long x 90' wide and operates from mid September to late March each year
- ▶ Figure Skating hours per month – 36
- ▶ Minor Hockey hours per month – 46
- ▶ Recreational Hockey Leagues hours per month – 68
- ▶ Other Private Rentals (average) hours per month – 27
- ▶ Curling has committed to 15 weekends (Fridays and Saturdays) from October thru March
- ▶ Hockey Tournaments – 7

Small Halls

- ▶ Craigleith Community Centre

- ▶ 132 Lakeshore Road, Craigleith
- ▶ Capacity = 30 people
- ▶ Municipal water and sewer
- ▶ Typical uses include family reunions, dinners, birthday parties, etc.

- ▶ Ravenna Hall

- ▶ 628299 Grey Road 119, Ravenna
- ▶ Capacity = 43 people
- ▶ Accessible entry
- ▶ Accessible washrooms
- ▶ Well and septic systems
- ▶ Typical uses include family Christmas dinners, Yoga, arts and crafts, birthday parties, etc.

Building Maintenance

- ▶ Capital and Operating Maintenance of Town Hall, OPP Detachment, The Blue Mountains Public Library, Craigleith Heritage Depot, Craigleith Community Centre, and the Ravenna Hall
- ▶ All facilities are inspected monthly
- ▶ Administration of cleaning contracts and snow removal contracts/services for all facilities
- ▶ Additionally building maintenance staff coordinated the Facility Condition Assessments for all 43 Town facilities