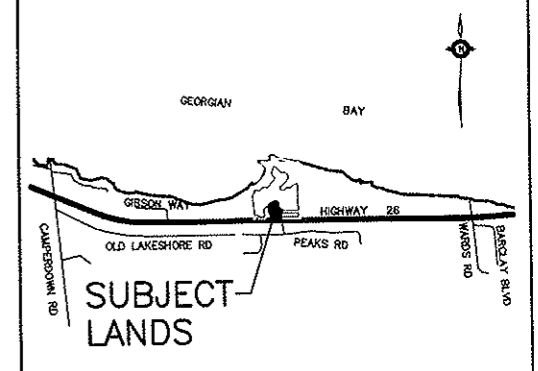


DELPHI COURT

TOWN OF BLUE MOUNTAINS



FUTURE RESIDENTIAL
(ADDITIONAL LANDS OF THE OWNER) BLOCK 7
16M-37

FUTURE RESIDENTIAL
(ADDITIONAL LANDS OF THE OWNER)

FUTURE RESIDENTIAL
(ADDITIONAL LANDS OF THE OWNER)

BLOCK 6, 16M-37
14a 15a 16a
FUTURE RESIDENTIAL
(LANDS OWNED BY OTHERS)

KEY PLAN
(N.T.S.)

DELPHI COURT
VACANT LAND
DRAFT PLAN OF CONDOMINIUM

LEGAL DESCRIPTION
BLOCK 4 REGISTERED PLAN 16M-37
AND PART OF LOT 26 CONCESSION 5
(FORMERLY TOWNSHIP OF COLLINGWOOD)
TOWN OF BLUE MOUNTAINS
COUNTY OF GREY

OWNER'S CERTIFICATE
THE NEIGHBOURHOODS AT DELPHI POINT INC.
BEING THE REGISTERED OWNERS, WE HEREBY
AUTHORIZE UPPER CANADA CONSULTANTS TO
PREPARE AND SUBMIT THIS DRAFT PLAN OF
SUBMISSION TO THE GREY COUNTY
PLANNING DEPARTMENT FOR APPROVAL.

Paul R. Thomsen 2/23/13
DATE

SURVEYOR'S CERTIFICATE

I HEREBY CERTIFY THAT THE BOUNDARIES OF
THE LANDS TO BE SUBDIVIDED AND THEIR
RELATIONSHIP TO THE ADJACENT LANDS
ARE ACCURATELY SHOWN ON THIS PLAN

Paul R. Thomsen 2/23/13
DATE
PAUL R. THOMSEN OLS
ONTARIO LAND SURVEYOR
ZUBEK EMO, PATTEN & THOMSEN LTD.
COLLINGWOOD

**REQUIREMENTS OF SECTION 51(17)
OF THE PLANNING ACT**

- a) SEE PLAN
- b) SEE PLAN
- c) SEE PLAN
- d) SEE PLAN
- e) SEE PLAN
- f) SEE PLAN
- g) SEE PLAN
- h) MUNICIPAL WATER
- i) SAND, SILT
- j) SEE PLAN
- k) MUNICIPAL SAN.
- l) SEE PLAN

LAND USE SCHEDULE

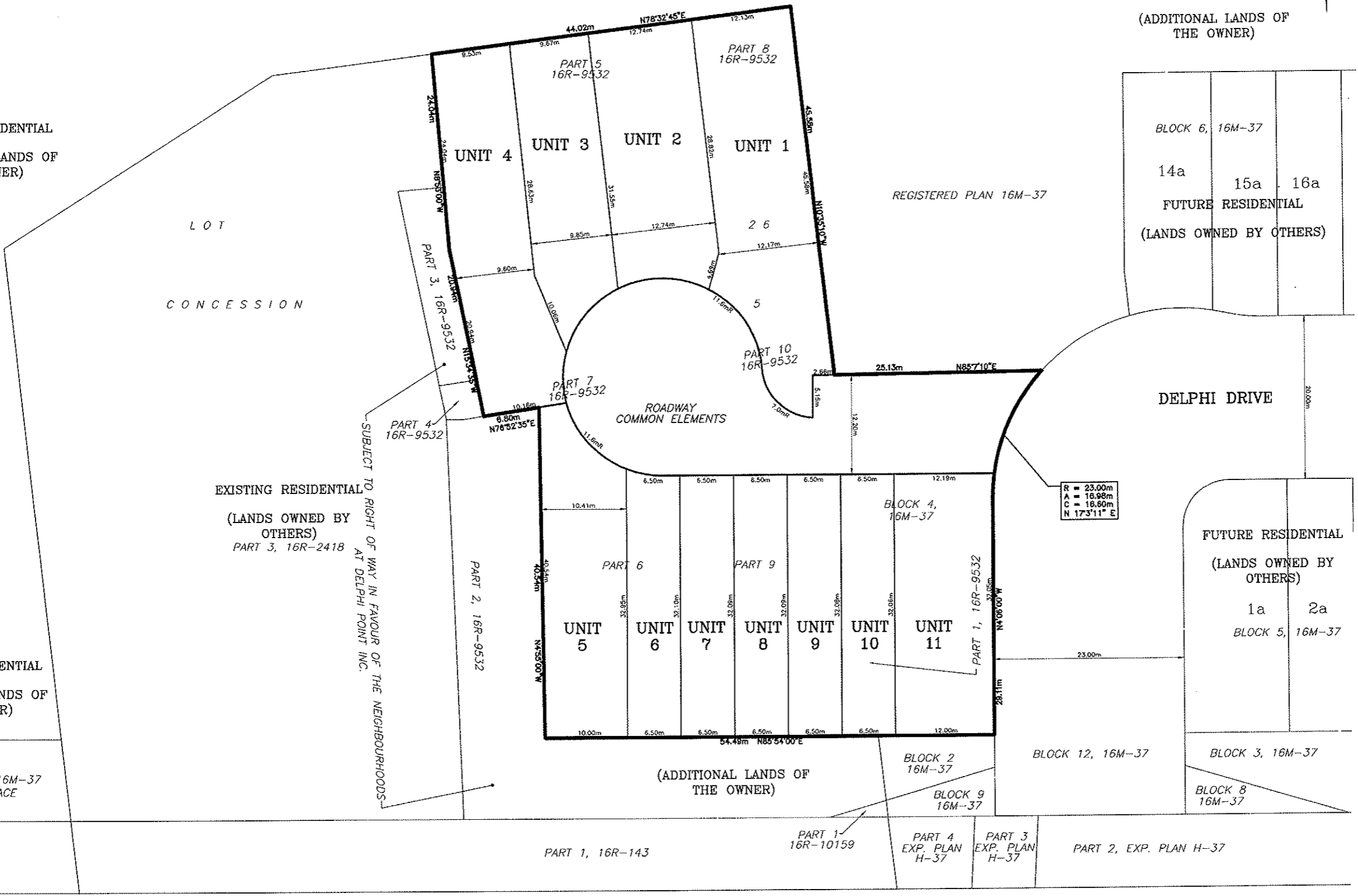
LAND USE	UNITS	NR OF UNITS	AREA(m ²)	%AREA
SINGLE FAMILY	UNIT 1,2	2	948	21.64
SEMI	UNIT 3,4	2	780	17.81
TOWNHOUSES	UNIT 5,6,7,8,9,10,11	7	1812	41.37
ROADWAY			840	19.18
TOTAL		11	4380	100.00
DENSITY	25.114u/ha			

REV.#	ISSUED FOR APPROVAL	DESCRIPTION	DATE	BY
0				

DRAWN BY: B.V. DATE: FEBRUARY 15, 2013
SCALE: 1 : 250 DRAWING No: 0555-DP

UPPER CANADA CONSULTANTS
ENGINEERS/PLANNERS

261 Marlindale Rd. #1
St. Catharines, Ontario
L2W 1A1
Phone: (905) 688-9400
Fax: (905) 688-5274



R = 23.00m
A = 18.98m
C = 18.80m
N 17°3'11" E

KING'S HIGHWAY No.26